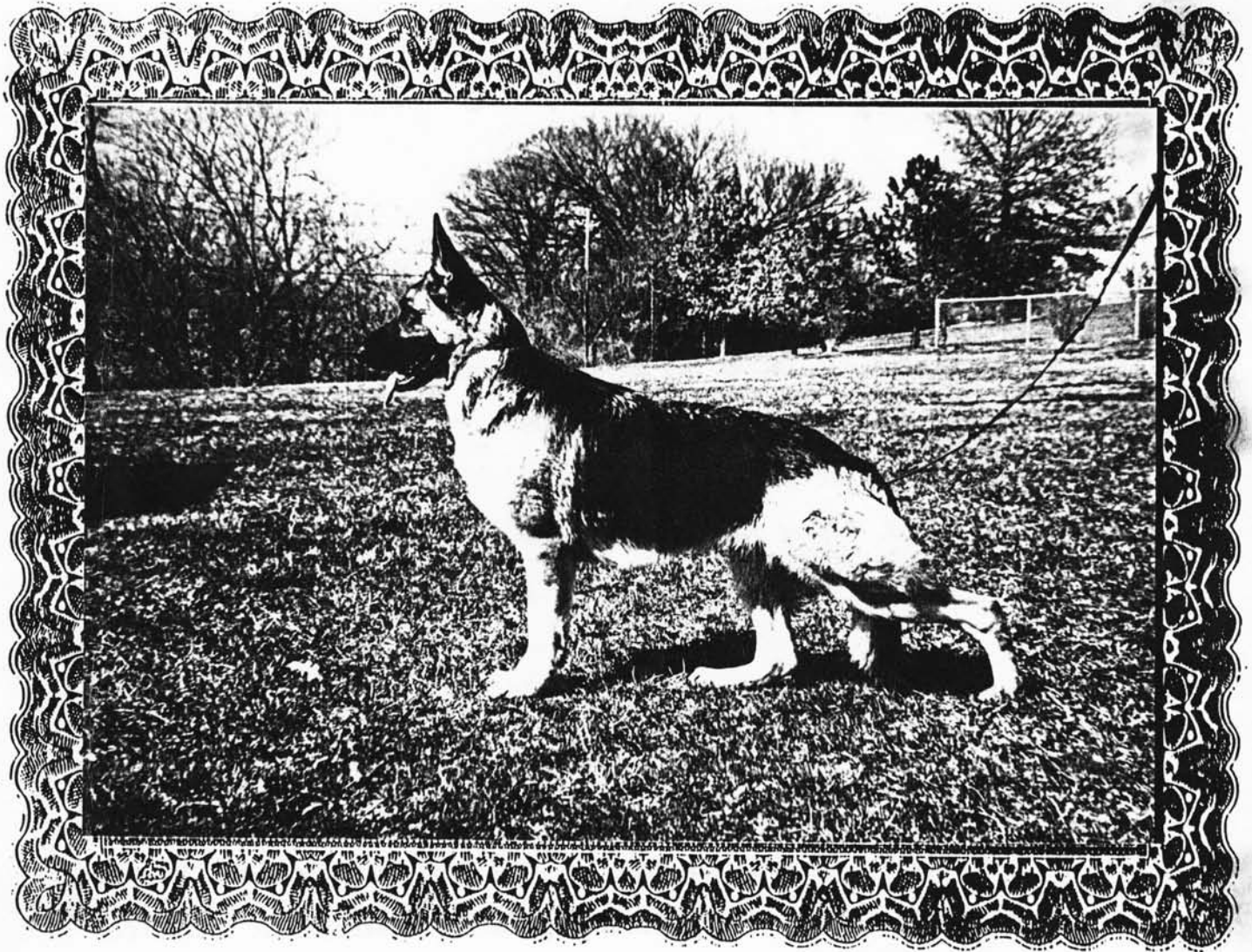


WAG 'N' TONGUE



ANDAKA'S KAHLA OF ZEDERLAND

OFFICIAL PUBLICATION OF THE GERMAN SHEPHERD DOG CLUB OF ST. LOUIS, INC.

APRIL 1989

LOOKING FINE

IN 1989

SIX IS OUR LUCKY NUMBER!

KAHLA -- our "COVER GIRL" was awarded SIX more points, giving her a grand total of nine. She only needs her majors to finish.

Thank you Chester Collier WB & BOS 2 points

Robert Wahl WB 2 points

J. Robert Page WB & BOS 2 points

See March, 1989 Wag-N-Tongue Page 10 for Kahla's Pedigree

LOLA -- our "SHOW GIRL" picked up SIX more firsts since the first of the year.

Thank you judges for your nice comments on our little girl!

ZEKE -- our "OLD MAN" received four reserves this year at the age of SIX years.

Thank you Mrs. James Edward Clark for the Major Reserve at Louisville.

Watch for KAHLA and LOLA with Ken Cunningham at specilaties and the Futuritu this spring, and for the whole gang with Fran Foster at the all-breed shows.

ANDAKA KENNELS

Daphne & Tony Szczuka
355-5455

14557 Foxford Ct.
Florissant, MO 63034

THE WAG-N-TONGUE IS THE OFFICIAL PUBLICATION OF
THE GERMAN SHEPHERD DOG CLUB OF ST. LOUIS, INC.

EDITOR: DAPHNE SZCZUKA

The purpose of the club shall be to encourage and promote the breeding of purebred German Shepherd Dogs and to do all possible to bring their natural qualities to perfection, to urge members and breeders to accept the standard of the breed as adopted by the German Shepherd Dog Club of America and approved by the American Kennel Club as the only standard of excellence by which the German Shepherd Dog shall be judged. To do all in it's power to protect and advance the interest of the breed by encouraging sportsmanship competition at dog shows, obedience trials, and tracking tests to aid with every possible means in demonstrating the German Shepherd Dogs' conspicuous abilities as companion, Red Cross, Police, Herding, Rescue Dog, and Guide Dog for the Blind, to conduct shows, obedience trials, demonstrations, etc. under the rules of the American Kennel Club, to publish literature and periodicals in the interest of the German Shepherd Dog. This club shall not be conducted or operated for a profit or remainder or residue from dues or donations. to the club shall inure to the benefit of any member or individual.

Regular club meetings are held every month on the third Friday, except in August (Annual Picnic) and December (Annual Christmas Party) at 8:00 P.M. The meeting place is the Brentwood Recreation Center, 2505 South Brentwood, unless otherwise noted.

OFFICERS AND BOARD OF DIRECTORS OF THE CLUB

PRESIDENT.....Bud Leistner
VICE-PRESIDENT.....Dyan Harper
RECORDING SECRETARY.....Kathy Redford
TREASURER.....Don Krueger
CORRESPONDING SECRETARY.....Marilee Wilkinson
3138 E. Romaine
Imperial, MO 63052

BOARD MEMBERS.....Harold Beckham
Judy Deane
Larry Duerbeck
Marcia Hadley
Bill Harper
Alice Krueger
Larry Sisson
Ken Dieckmann
(Past President)

The opinions of writers or advertisers in this publication do not necessarily constitute the views of the German Shepherd Dog Club of St. Louis, Inc.

TABLE OF CONTENTS

- 2--Table of Contents
- 3--Regular Meeting Minutes
- 5--"I Married Into a Dog Show Family" by Tony Szczuka*
- 6--House Bill 684
- 7--"Canine Diarrhea Complex" by David R. Hughes, DVM
- 12--Ad--Clark
- 14--"Eli's Triumph" by Renee Tiepelman
- 16-- Plan to Attend
- In the Back:
 - Stud Dog Directory
 - Ad Rates
 - Breeder's Page

*Denotes Original Article



REGULAR MEETING MINUTES
February 17, 1989

The regular monthly meeting of the G.S.D.C. of St. Louis, Inc. was called to order by President Bud Leistner at 8:15 p.m. at the Brentwood Recreational Center.

Bill Harper moved we dispense with the regular meetings so that we could proceed with the educational presentation. The motion was seconded by Sharon Dieckmann and passed.

Dr. David R. Hustead gave a presentation on canine diarrhea.

The roll was called. Ken Dieckmann was absent.

The minutes of the Jan. 20, 1989 meeting were read and approved. Jan Dietrich moved that we not read the Board Meeting minutes until after they have been approved. The motion was seconded by Rosalind North and passed.

The Treasurer's report was read and approved for audit.

Committee Reports

Corresponding Secretary: Marilee Wilkinson received letters from Metropolis, offering their facilities for Sunday fun matches. A letter from George Collins concerning items for sale from the National Show. She recieved a listing of judges for 1989 and a letter from the Fut./Mat. chairman concerning advertisement.

Training: Harold Beckham reported the classes were progressing. The South class is in its sixth week and the North class is in its fifth week due to inclement weather.

Audit: Barb Bronson reported that the books are balanced and in order. She also recommended that the club change from Plan D to Plan B on the copy machine. She then made a motion that the club change to Plan B. The motion was seconded by Alice Krueger and approved.

Mag-N-Pongue: Daphne Szezuka announced that we will begin selling the front cover as an advertisement for \$25.00, 1/2 back page for \$6.00 and the inside back cover for \$10.00. Daphne also reported that there is room for two more ads on the Stud Dog page for \$3.00 until June, at which time ads on that page will be \$15.00 a year.

Royal Hecht: Marcia Hadley presented the Royal Hecht awards.

Spring Show: Larry Duerbeck reported that the show site will be at the Roadway Inn at Natural Bridge and Woodson. The grounds are being donated by Emory Air Freight. He also mentioned the possibility of having a Victory Dinner.

Education: Dyan Harper thanked Dr. Hustead for his presentation. She announced the March educational program would be on tracking, presented by Tom Rose.

Don Krueger reported that the North Cnty. Obed. Club rings would not be available for our use at the Spring Show. He mentioned contacting the Newfoundland Club. Larry Sisson said there was one coil of ski-type rope in the trailer.

President Leistner announced that there was an article in Dog World concerning our Fall Show and the Canine Awards. He read portions of a letter from the Mixed Breed Dog Club concerning restrictive laws, a copy of the letter will be in the Jag-N-Tongue. He also reported that there will be a Fun Match on July 22, 1989, the proceeds of which will go to the K-9 Defense. The Mixed Breed Club is taking donations for a raffle and or ads for the match. Harold Beckham made a motion that the club put a full-page ad in their catalog advertising our Fall Show. The motion was seconded by Louise Leistner and passed. President Leistner asked Nancy Kearney to take care of this.

Old Business

Barb Bronson reported that she had a phone number on the War Dogs, she would check to see if the organizations was legal.

Don Krueger mentioned raising the due to \$15.00 a year beginning in 1990.

Daphne Szczuka reported that the Breeders Code couldn't be changed because it was a part of the By-Laws.

New Business

President Leistner presented a 1989 Shepherd calendar to be auctioned, Jan Dietrich won the calendar with a \$13.00 bid.

The guest list was read

There was a brag box.

Bill Harper moved we adjourn, the motion was seconded by Helene Bridges and passed. The meeting was adjourned at 10:30 p.m.

Respectfully submitted,

Kathy Redford
Kathy Redford
Recording Secretary

I MARRIED INTO A DOG SHOW FAMILY

by Tony Szczuka*

*Original Article

When I was dating, I thought my girlfriend really liked dogs. So much so that she even went to a dog show or two. I assumed after we got married that we might spend a Sunday afternoon at a dog show every now and then and that was just fine by me. Little did I realize that I was about to marry into a **DOG SHOW FAMILY!**

Here are a few of the clues that told me this:

1. When we were dating, my wife carried things like lipstick and eye shadow in her purse. Now she carries liver and Beef Jerky.
2. I now get up earlier on the weekends to go to a dog show than I do during the week. Not only am I not getting paid for getting up this early, but it isn't even for a golf game.
3. A quiet evening at home means watching TV in the basement with four German Shepherds who don't understand the meaning of words like quiet, stay, lie down, etc.
4. Showing off pictures of your 'kids' gets you comments like "Good Back", "Nice Reach", "Are His Ears Up?".
5. Getting up at 1:00am, driving eight hours, standing on a concrete floor for hours, all for a minor reserve is ... what did you call it? Oh yea, FUN!
6. Going out at night means a fast food dinner and a one hour drive to training class.
7. A Shopping trip is going to a dog show you have nothing entered at just to 'shop'.
8. If the weather is nice enough to go golfing, it's nice enough to take the dogs to the park.
9. I pay money to a stranger to take my dog away from me, tell me where I can go, and take all the glory if the dog wins!
10. When I went to purchase a new sports coat, my wife told the salesman that it had to be machine washable since I would be wearing it to the dog shows.
11. Now all the ties I get for Christmas and Birthdays have dogs on them.
12. Whenever we go on Vacation, we always ask two questions. First, do we take the dogs or board them. The second question is what do we do with them when we get there because we always take them.

MEMBERS - PLEASE NOTE - PLEASE WRITE YOUR STATE REPRESENTATIVE AND ASK THEM TO VOTE TO PASS HOUSE BILL 684. THE CANINE CORPS AND MOUNTED PATROL NEED YOUR SUPPORT. THIS BILL WOULD MAKE IT A CRIME TO SHOOT, POISON OR MISTREAT A POLICE DOG OR POLICE HORSE. IF YOU DON'T KNOW YOUR STATE REPRESENTATIVE - CALL THE BOARD OF ELECTION COMMISSIONERS; THEY CAN TELL YOU. FILL IN THE NAME BELOW, YOUR RETURN ADDRESS AND YOUR SIGNATURE. THEN MAIL TO THE ADDRESS SHOWN. PLEASE HELP!!

The Honorable
House of Representatives
State Capital Building
House Post Office
Jefferson City, Missouri 65101

Dear Sir:

Please vote for passage of House Bill 684. This would make it a criminal offense to shoot, poison or mistreat a police dog or police horse in this state. These animals perform a valuable service for the citizens of Missouri. They deserve the full protection of the law. Thank you for your consideration.

Very truly yours,

David R. Hustead, DVM
Professional Services
Fort Dodge Laboratories

Canine Diarrhea Complex

Canine Diarrhea is a major health threat. Due to its many causes, the control of canine diarrhea is only possible by making changes in management procedures. A rational vaccination program will be an invaluable tool in an integrated control program.

Vomiting and Diarrhea

Is the protective response of the G.I. tract to any insult.
Is not a diagnosis or a disease description.
In excess, it results in dehydration.
Dehydration results in depression followed by organ shut down and death.

Causes of Diarrhea

Infectious Agent

Parvo Virus	Herpes Virus
Corona Virus	E. Coli
Calici Virus	Salmonella Sp.
Rota Virus	Campylobacter
Distemper Virus	Many Others

Environmental

Stress
Sanitation
Housing
Poor Feeds
Toxins

Internal Parasites

Hook Worms	Giardia
Round Worms	Coccidia
Whip Worms	Trichomoniasis
Defects	
Tape Worms	

Miscellaneous

Other Diseases
Drugs
Congenital

Accidents
Unknown

Canine Rotavirus (CRV) - May be more important than we think.

Canine Parvo Virus (CPV)

Incubation 4-7 days

Duration 10 days

Virus is shed in all body fluids, especially stool.

Virus has long life in soil or protected surfaces - months, years?

Canine Corona Virus (CCV)

Incubation 1-5 days
Duration 10 days up to 3 weeks
Virus is shed mostly in stools
Short life in soil - usually dog to dog transmission

Combined CPV+CCV

Incubation rapid
Almost always fatal
Death may occur before diarrhea begins
Occurs more frequently than first thought

Control of Canine Diarrhea

Records

May be the simplest and most effective tool you can use.

Environment Control

Control the STRESS of:

Overcrowding	Ammonia Levels
Fluctuating Temperatures	Fly Irritation
Drafts	Water Quality
High Humidity	Social Groupings
Abnormal Day/Night Cycles	

Sanitation

- Remove Organic Waste Daily
- Wash All Surfaces
- Disinfect Surfaces
- Dry Surfaces Before Replacing Animals

Pest Control

Suggestion - visit a successful swine farrowing unit. Observe their management practices and sanitation procedures.

Maintain High Levels of General Health

Quality Dog Foods

Routine Veterinary Care

Parasite Control/Prevention

Sick Animal Care - Herd Strategy

Quick Observation

Isolation/Quarantine

Prompt Professional Care

Follow Approved Treatment Guidelines

Adult Vaccination Programs

Control Exposure

- Incoming People
- Incoming Animals
- Animal Confinement Groups

Maternal/Pediatric Confinement Group

- May be the most important thing you do.
- Ideally placed in a separate physical facility.
- A separate room could be used.
- All surfaces must be easily cleaned
- Environmental Control
 - Heat/AC/airflow
 - Humidity
 - Odor Control

- Attempt to use all in/all out techniques

- Dogs to whelp within a certain period enter the facility together. They then all remain in the facility until all pups are weaned. Pups stay in isolated area until sale or until about 18-20 weeks.

- Prior to admission to facility

- Dogs must be healthy.
 - Dogs must be freshly bathed.
 - Current on vaccinations and wormings.

- People that enter facility

- Wear disinfected rubber boots
 - Wear coats/smocks
 - Wash arms and hands

- All equipment that enters facility must be disinfected.

- It should then stay in confinement area:

- Buckets, mops, water bowls, hoses, medicines, everything.

Kennel Vaccination Programs

Vaccinations are only a part of a disease control program.

The immune response is a biological process. It is not the same in all individuals. Protection is not an all or none process. There are many shades of grey. Vaccines, by themselves, do not provide protection. The animal's immune response to the vaccine is what brings about protection. When a vaccine appears to fail, it is really a failure of the dog's immune system to respond correctly to the vaccine.

How a Vaccine Works

Vaccine contains an altered virus or bacteria (antigen) that can no longer cause actual disease. When this antigen is first put inside the body, the normal host defense mechanisms are stimulated to remove these antigens. This initial removal of the antigen is very slow and not very effective, but this stimulation cause the production of memory cells. Memory cells have the ability to remember how to deal with a particular antigen. If that same antigen (but now able to cause disease) is reintroduced to the body, the host defense mechanisms spring into action quickly and efficiently to remove the health threat. Response to a vaccine depends on:

- Vaccine Type
- Maternal Protection Status
- Health Status
- Immune Status

Maternal Protection Against Disease is:

- Provided by pup drinking colostrum
- Only absorbed by pup in first 24 hours of life
- Highly variable among pups in same litter
- Maternal antibodies diminish by 50% every 8-10 days

- High Levels of Maternal Protection
- Protect puppy from disease
- Will not respond to vaccine

- Critical Period - Duration Unknown - It may not occur or it may last for weeks.
- Protection Unknown
- Vaccine response unknown

- How Levels of Maternal Protection
- Puppy Sensitive to Disease
- Should Respond to Vaccine

Our goal with puppy vaccinations is to establish active immunity just prior to the loss of maternal protection against disease.

Vaccination Frequency

Booster vaccinations are scheduled in an effort to keep the critical period as short as feasible. In a house pet, a three week vaccination interval may be adequate to protect from low level exposure. In a high risk kennel, weekly vaccinations may be considered in an attempt to shorten the critical period as much as possible.

Vaccine Selection - Very Important

Multiantigen vs Single Antigen

Modified Live Vaccine vs Killed Vaccine vs A Virulent Live Vaccine

- Safety
- Efficacy

Vaccine is a sensitive biological product

It will be inactivated by

Heat

Cold

Sunlight - UV Radiation

Detergents

Chemical Disinfectants

The transportation controversy

Never mix vaccines that are intended for separate use

SAMPLE VACCINATION SCHEDULE

High Risk House Pets and Low Exposure Kennels	Age (weeks) 3 wks	Higher Exposure Kennel
	5	Duramune PC/Pv
Duramune PC/Pv	6	
	7	Duramune DA2P/Pv/CvK
Duramune DA2PP+CvK	8	
	9	Duramune PC/Pv
Duramune PC/Pv	10	
	11	Duramune DA2P/Pv/CvK
Duramune DA2PP+CvK	12	
	13	Duramune PC/Pv
	14	
Duramune DA2PP+CvK	15	Duramune DA2PP+CvK
	16, 17	
Trimune/Duramune Pv/PC	18	Trimune/Duramune Pv/PC

Weekly vaccinations may be needed in the age range of 5-12 weeks or longer to keep epidemic viruses under control, especially parvo virus.

Adult booster vaccinations should be given annually or semiannually, and/or, prior to anticipated exposure.

In sick or previously exposed puppies avoid vaccinations especially with multi antigen products.

Avoid the simultaneous use of live intranasal products and modified live vaccines

This vaccination schedule is meant for education purposes only, any vaccination program should be started only after consultation with your veterinarian.

LITTER DUE MARCH 6 1989

VASHTA VON SPEZIALBLUT CD, SchHI, AD, KKLia
VASHTA WAS BREED TO A EAST GERMAN MALE.
V SASCHA VON DER WEISSEN TAUBE SchHIII, FH, KKL, DDR.
SASCHA WENT V10 1987 in DDR.
IM LOOKING FOR NICE CONFORMATION AND WORKING PUPPIES.

FOR MORE INFORMATION CONTACT.
DEBORAH CLARK
343- 5387

GERMAN SHEPHERD DOG BREED SURVEY

Male — Female

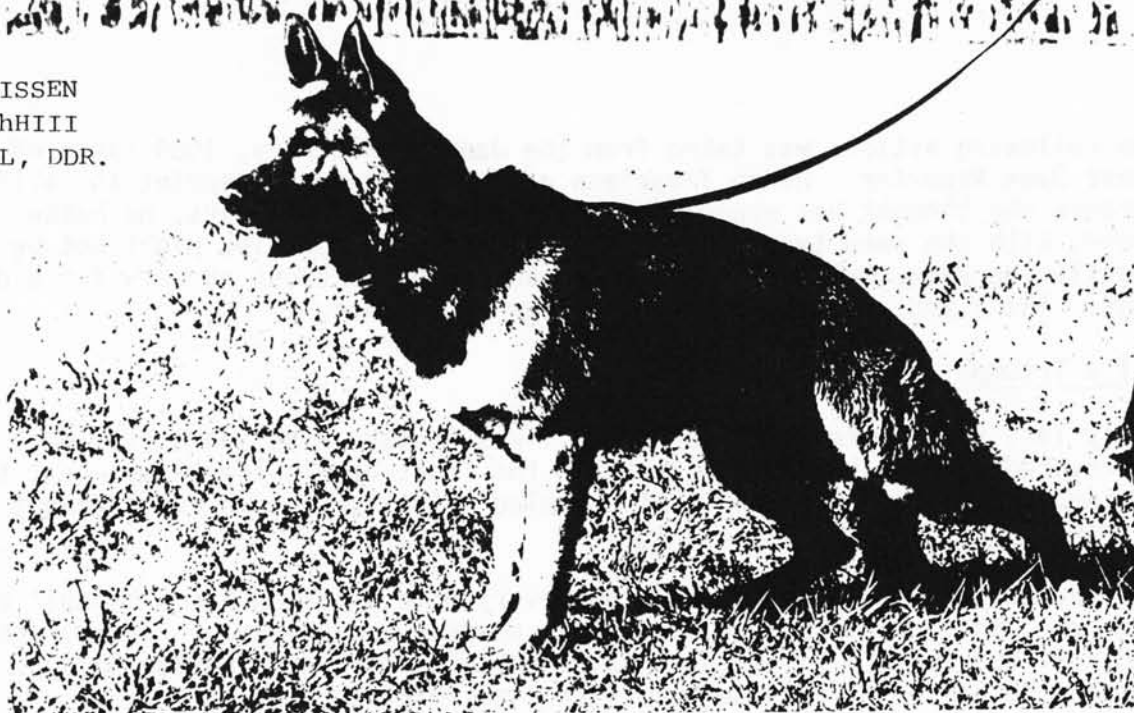
Name VASHTA VOM SPEZIALBLUT Tattoo # D302653
Reg. # D302653 Date Whelped 11-14-84 Training Degrees SchH I
Hip Certification OFA GOOD Survey Class Ia Survey Time Span 1988-90
SIRE: QUELL VON DER QUELLENHOEHE SZ1426366 SCHHIII SR:V
Grandsire: GREIF VOM BIELKOPF SCHHIII FH "a" SR:V-A
Grandam: ELFIE VON DER QUELLENHOEHE SCHHII "a" SR:V
DAM: ISAR VON STEINACKER SZ1484081 SCHHIII
Grandsire: CYRAS AUS DEM WEINSBERGTAL SCHHIII "a" SR:V
Grandam: HEXE VOM OLFENER LAND SCHHII "a" SR:V
LINE BREEDING: BERND VOM LIERBERG 5-4
BREEDER: MARY COPPAGE
OWNER: DEBORAH CLARK
Address: 707 DYNASTY FENTON MO 63026
CO-OWNER: _____
Address: _____

ASSESSMENTS ON DAY OF SURVEY

I. GENERAL IMPRESSION

Large, sufficiently dry, firm, very good proportions, very appealing appearance during stance, flat withers, good line during stance, slightly uneven while moving. Long and sloping croup, correct tail, slightly open shoulder and knee angulations, correct front, good bones, good firmness of pastern, moves slightly close to the ground, length of stride still good. Self-assured and confident temperament, fighting instinct, courage and hardness pronounced. Does out.

V SASCHA WEISSEN
TAUBE SchHIII
FH. KKL, DDR.



Ahnentafel

Inzucht auf:

für den

Deutschen Schäferhund

Name des Hundes **S a s c h a** von der weißen Taube
Geschlecht **Rüde** Inzucht **Stockhaar**
Farbe und Abzeichen **schwarz-braun**
Bisondere Kennzeichen
Wurftag **29. September 1983**
Wurfjahr in Buchstaben **Neunzehnhundertdreißundachtzig**
Züchter des Hundes **Name Arthur Krogmann**
Wohnort 1950 Neuruppin, E.-Mühsem-Str. 33

on ekört bis 20.08.1990
WZ 6546/44
Pasewalk, den 20.08.27
gez. Bratke-Fiebig

Typ	Rasse	Körperbau	Wesen
1	1	1	1

Eingetragen in das Zuchtbuch
für Deutsche Schäferhunde (SZ)

Nr. 135 437

Bil.

Die Ahnentafel hat nur Gültigkeit, wenn sie vom Züchter eigenhändig unterschrieben ist; sie gilt als Urkunde im juristischen Sinne. Wer Ahnentafeln fälscht, ist mit solchen Mißbrauch bestraft, wird strafrechtlich verfolgt. - Bei Verlust des Hundes ist die Ahnentafel dem neuen Besitzer auszuhandeln. - Bei Verlust des Hundes ist die Ahnentafel der Zentralstelle zurückzugeben; sie bleibt Eigentum desselben.

Einkaufungen über den Wurf, zu dem dieses Hund gehört	
Rüde	Hündin
Wurfnummer bei der Geburt	4 5
Tagelohn	-
Getotet	1 2
Vorname bis zum 6. Tag	-
Vorname bis 2. Eintragung	-
Zum Zuchtbuch gemeldet	3 3
Nicht ausgewiesen	-
Anmerkung (best.)	-
(nicht best.)	-

Zuerkennung d. Abzichteckens

Prüfung am

Eltern	Groß-Eltern	Urgroß-Eltern	Urngröß-Eltern
Vater a-I g o r v. Haus Assja 111 684 SchH II Kör. 5546/44	a-H a c k y v. Echoberg 84918 SchH I ZTP 5546/44	a-Cliff v. Bleichfleck 65465 SchHIII FHIII PSIII Kör. 6547/43	Ex v. Riedstern 33052 III Bärbel v. d. Bersdorfer Flur 4328
	a-D i n a v. Haus Assja 60038 SchH I FH I Kör. 5546/44	a-Eddi v. Echoberg 70295 ZTP 5543/22	Barras v. Wiener-Hof 55612 I Esche v. Osterberg 42272 II
		a-Ex v. Riedstern 33052 SchH III Kör. 5533/32	Dux v. d. Schockengrube 19591 II
		a-Assi v. Waldschlößchen 38247 SchHIII FH III Kör. 6545	Edda v. Falkenwappen 14257 I
Mutter a-Q u a n e t t 7.2. weißen Taube 116 525 SchH I ZTP 5547/32	a-K e n d i v. Baruther Land 89640 SchH I Kör. 6546/34	a-Gomo v. Osterberg 44084 SchH III Kör. 6543/43	Ex v. Riedstern 33052 III Burga v. Osterberg 35054 I
		a-Laura v. Baruther Land 65090 SchH II Kör. 5446/34	Hanko v. Haus Himpel 40521 I Mera v. Baruther Land 34380 II
	a-C a r a v. Andershofer Ufer 101 411 SchH I ZTP 5547/22	a-Ilka's Duran 82417 SchH I PSH I Kör. 5545	Ohle v. Runderck 57963 II Qndra v. Runderck 68021 I
		a-Cora v. Wulferona 24481 SchH I ZTP 5547/32	Cliff v. Bleichfleck 65464 III Dina v. Campischen Hof 65169

The following article was taken from the January/February, 1989 issue of *The Great Dane Reporter*. Renee Tiepelman gave permission to reprint the article because she thought her experience might be of help to others, no matter the breed, with the same type of decision to make. The problem might not be exactly the same, but many of us have had to decide about surgery for older dogs. Thank you, Renee, for sharing your experience.

Eli's Triumph By Renee Tiepelman

Early last year, three weeks before Eli was to turn nine years old, we discovered that he had lost a tooth in the front of his lower jaw, next to the canine. We noticed it because it had bled a little, but we just thought that he had lost a tooth due to old age.

For the next few days, I noticed that every time I tossed him a biscuit or an ice cube, there was a raised pink area, about the diameter of a dime, where he had lost the tooth. I made an appointment with our veterinarian because I assumed he had an abscess and would need antibiotics.

My vet, Dr. Gordon Gilliatt, took one look at the spot and gave me the bad news. He felt sure that it was a carcinoma. I was devastated, broken-hearted. I just knew I was going to lose my precious companion. Dr. Gilliatt said we would have to biopsy to be sure, but he felt confident it was malignant. The biopsy was done and sent to the University of Missouri in Columbia, MO. It was agonizing waiting for the results and sure enough, it was malignant.

Dr. Gilliatt urged me not to throw in the towel just yet. He sent us to the University (two hours away) to talk to the doctors there. They examined Eli and proceeded to explain to me what they recommended by way of an operation. They wanted to remove not only the tumor, but a section of his lower jaw. More precisely, from in front of the canine on the right side to behind the canine on the left side. I thought to myself, "How barbaric!" How could I let them do this to my Great Dane, especially one so old. When it was apparent that I was backing off, the doctors told me that all the preliminary tests revealed that, other than the tumor, my dog was incredibly healthy and there was no evidence that the cancer had metastasized to his lungs. They seem appalled that I would even consider not giving Eli this chance. I told them that my big concern was quality of life, not quantity and that I wasn't going to put my dog through a lengthy, painful recovery just to gain more time. They assured me that he would have quality of life after surgery, and that recovery time would be minimal.

I needed more time to think. Eli and I went home. My husband, John, and I discussed at great length, "What is right for Eli?" Above all, we wanted to be fair to him. The next day I asked Dr. Gilliatt, "If he was your dog, what would you do?" He replied, "Even considering his age, but also considering his health, I would have them do the surgery."

So off to Columbia went Eli and John. The operation was performed on Thursday morning. This was a very anxious time for us as we were hoping we had made the right decision. John stayed at the veterinary school until Eli was out of surgery. Everything had gone quite well and Eli was in intensive care. He would have to stay a few days for observation.

Eli (Continued)

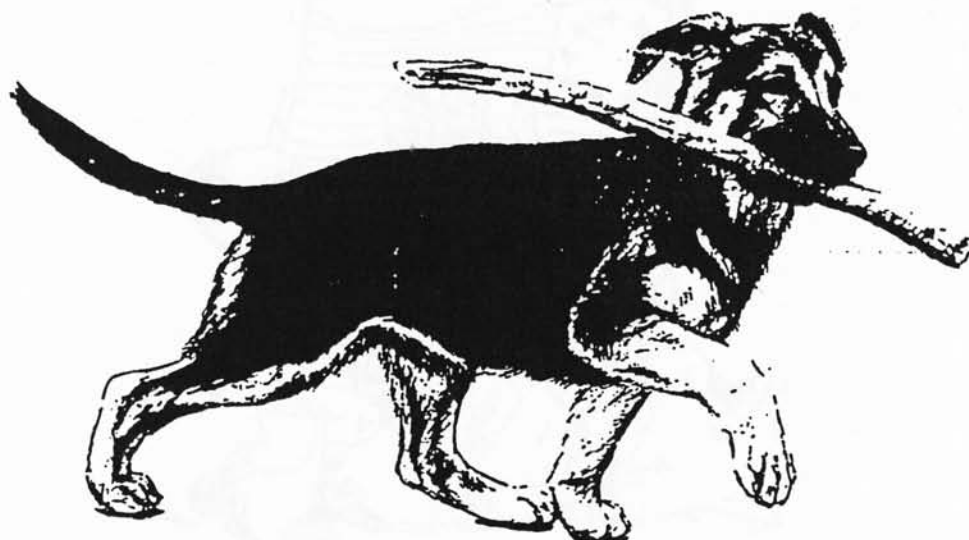
I traveled to the University on Saturday morning to spend the weekend with Eli. The doctors let me take him to a nearby motel and keep him overnight. They would be on call if I needed them. It was so good to spend time with Eli, even though he did a lot of sleeping. I took him back to the hospital on Sunday afternoon and returned home that evening.

On Monday morning the hospital called and said that Eli could go home. I was on the road within minutes. I could hardly wait! I was given instructions on how to feed him and what to watch for. He was to eat strictly canned food for two weeks and then be gradually weaned back to his normal diet. His appetite remained good. Once home, Eli was very happy. By Thursday he seemed pretty much back to normal.

Everything I had been told by the doctors at the University of Missouri and my own vet, Dr. Gilliatt, proved to be true. They said the recovery would be quick and that quality of life would be evident. The doctors and the student in charge of Eli, Mike Weiss, gave him very good care and were sincerely interested in him. Mike had become particularly fond of Eli.

Eli's lower jaw is a different shape now and has no front teeth. But, with those big beautiful lips that drape down both sides, he is just as handsome as ever. I realize that every situation is different and that in more advanced cases of cancer of this type, perhaps a different decision would be most kind. But, I did want you to know our story so that if some day you face a similar circumstance and have the same concerns, you can reflect back on this experience.

By the way, "Eli" is Ch. K-D Dane's Afternoon Delight, C.D. He still chews on nylon bones, visits nursing homes, and reigns supreme over the other dogs.



PLAN TO ATTEND

LEMAY DAYS PARADE

April 29, 1989

short parade into park

meet at 9:00 am at south Broadway and Hoffmeister

for more information

call Marilyn Balsman at 892-7314



Stud Dog Directory

CH. CARALON'S NICHOLAS OF JUDEEN, C.D.

OFA # GS-12403-T "GOOD"

Sire: Forest Knoll's TNT

Dam: Ter-Cy's Jasmine, C.D., T.T., V.B., SCH.H.I.

Nick is a medium sized black and tan, with good angulation, fluid suspension, and is clean comming and going. Dominant for producing overall soundness, good feet and pasterns, good backs, and working ability in A.K.C. obedience, Schutzhund, Police work, tracking, herding, and conformation. Dominant for producing solid blacks.

Owner: Judy A. Deane...5201 Windmill Rd....Imperial, MO 63052...(314) 464-1084

U.S. & CAN. CH. CARALON'S TREFFERHUMD JUDEEN, C.D. OFA # GS15018-T "GOOD"

Sire: Ch. Caralon's Nicholas of Judeen, C.D.

Dam: Hund Morgan Deirberg

Treff is large boned, dark black and tan, who is very sound comming and going, with excellent shoulder suspension. He produces good feet and pasterns, good backs and masculine characteristics in his sons. Treff is producing well with both German and American bloodlines, and is dominant for producing solid blacks.

Owner: Judy A. Deane...5201 Windmill Rd....Imperial, MO. 63052...(314) 464-1084

CH. BRENTARYL'S CARALON GRAYSON

OFA #GS-18743G24M

Sire: Sel. Ch. Stuttgart's Sundance Kid, ROM Dam: Ch. Stonekroft's Josie, ROM
Large, substantial black and red-gold, masculine dog with beautiful strong head, dark eyes, ideal feet and pasterns, suspending gait, balanced structure, very heavy bone, and firm ears.

Owners: Caralon Kennels / Pat Parsons, Helen Sherlöck, and Gertrude Kessler
Rt. 1 Box 69-E....Labadie, MO. 63055...(314) 742-5432

CH. CARALON'S BEAU OF JUDEEN

OFA # GS-19443G36M

Sire: Ch. Caralon's Nicholas of Judeen, C.D. Dam: Sel. Ch. Caralon's Thistle, T.T., C.D.
Beau is a beautiful masculine stallion type, with a perfect male Shepherd head and expression. He has full dentition, excellent feet and pasterns, and a correct angle and layback of shoulder. Beau has a strong, sound temperment, very dark eyes, and a plush coat, and "THE LOOK OF EAGLES!"

Owner; Janis Dietrich...18 Daryl Lane...Ladue, MO 63124 (314) 993-1055 (314) 464-1084

(Continued.....)

Stud Dog Directory

CAPTAIN ZACK VOM TICHBRU, T.T.

OFA # GS18499-T "GOOD"

Sire: U.S. & CAN. CH. Caralon's Trefferhund Judeen, C.D. Dam: Caralon's Phantom Image

Zach is a masculine solid black, with full dentition, beautiful suspended sidegait, and is very clean coming and going. He is being campaigned and is major pointed. Zach is also in training for his C.D. He produces his excellent movement and temperament in his offspring....Elegance in both body and spirit.

Owners: Rufhaus Shepherds...Fran and Wally Ruoff...3619 Blackberry Ln....Imperial MO 63052
Phone (314) 296-3126

RIO RIO VALLE'S DISCOVERY

OFA # 19966G29M

Sire: Sel. Ch. Stuttgart's Sundance Kid, ROM Dam: Dolmar's Megan of Springrock, ROM

Younger fullbrother to US GV CH. Rio Valle's Nestle's Crunch. Large muscular black and gold with a high wither, iron topline and strong driving rear, long upper arm, and powerful sidegait. (Clean for coat factor.)

Owners: Caralon/Lockenheilm Kennels Ralph and Mary Smith and Helen "Scootie" Sherlock
5 Fawn Creek Rd....O'Fallon, MO. 63366...(314) 281-1863 or (314) 742-5432

VONSHORE'S FRISCO

OFA GS-21355G24M

Sire: CH. Vonshore's Arrow

Dam: Vonshore's Larceny

Large, bi-Color, well angulated front and rear with a firm back, and excellent croup and tailset. A GV Sukee's Mannix, ROM grandson. Linebred Phantom and Heim.

Owners: Caralon Kennels/ Larry Duerbeck and Betty Jean Lemler
Rt. 1, Box 69-E....Labadie, MO 63055 (314) 742-5432

ALEXIS VON RR BAR

OFA # GS-19019E77M

Sire: Kameron's E-L-O

Dam: Hedwig Von RR Bar

Strong, deep muscled, correct back, angles and perportion. Large boned, perfectly balanced, rich copper with jet black saddle. (Produces this pigment.) Carefully linebred from the finest foundation lines. "Max's" get are exceptional in brains, beauty, and movement.

Owner: Rosalind T. North...5428 Liberty School Rd...Hillsboro, MO 63050...(314) 586-6040

— Paid Advertisement —

WAG-N-TONGUE ADVERTISING RATES

FULL PAGE	\$6.00	STUD DOG DIRECTORY	\$15.00/yr
FRONT COVER	\$25.00	BREEDER'S PAGE	\$ 6.00/yr
BACKCOVER (1/2 page)	\$6.00	WIN-PLACE-SHOW	FREE
INSIDE BACK COVER	\$10.00		

WIN-PLACE-SHOW FORM

OWNER'S NAME _____

DOG'S NAME _____

SIRE _____ DAM _____

SHOW _____ JUDGE _____

DATE _____ CLASS ENTERED _____ PLACING _____

OBEDIENCE SCORE _____ TITLE COMPLETED _____

MAIL TO: Daphne Szczuka, 14557 Foxford Ct., Florissant, MO 63034

 ALL ADS MUST BE PAID IN ADVANCE. WE DO NO BILLING. ADS SHOULD BE CAMERA READY. -
 AN ADDITIONAL AMOUNT MAY BE CHARGED FOR AD LAY-OUT. BLACK & WHITE PICTURES
 REPRODUCE BEST ON OUR COPIER, ALTHOUGH LIGHT COLOR SHOTS MAY BE SATISFACTORY.

 SUBSCRIPTIONS MAY BE OBTAINED AT \$10.00 PER YEAR TO NON-MEMBERS. ADS--\$12.00.

APPLICATION FOR MEMBERSHIP

GERMAN SHEPHERD DOG CLUB OF AMERICA, INC.

Mail to: Membership Chairman, Mrs. Helen Fisher, 8139 38th St., Lake Elmo, Minnesota 55042

Ann. Dues \$20.00 plus \$10.00 initiation fee per person must accompany application.

All foreign payments, including Canada and Mexico, must be made in certified check or money order for American dollars. No foreign personal checks will be accepted.

Name _____
 (Mr.) (Mrs.) (Miss) (Please Print)

Address _____ Tel. No. () _____

City _____ State _____ Zip Code _____

Occupation _____ Age _____
 (must be 18 or older)

AKC Handler ☐ AKC Judge: Conf. ☐ AKC Judge: Obed. ☐

Kennel Name: _____

Regional Club Affiliation: _____

 Endorsed By Endorsed By

To the Treasurer, German Shepherd Dog Club of America, Inc.

I hereby make application in the above club
 and agree to be governed by its By-Laws if
 elected and also the By-Laws of the AKC.

 Signed

G.S.D.C. OF ST. LOUIS BREEDERS LISTING

*ALDON SHEPHERDS (P,S,OB.T.)
Don and Alice Krueger
2639 Farber Drive
St. Louis, Mo. 63136
(314) 741-2639

*JUDEEN SHEPHERDS (A,P,S)
Judy Deane
5201 Windmill Road
Imperial, Mo. 63052
(314) 464-1084

*ALLEZ SHEPHERDS (P,S,A)
Elizabeth Edwards
2843 Winabago
St. Louis, Mo. 63118
(314) 773-7315

*LAUGUIN SHEPHERDS (P,S,OB.T.)
Laura Shearin
Catawissa, Mo.
(314) 257-4578

*ANDAKA KENNELS (P,S,A)
Daphne and Tony Szczuka
14557 Foxford Court
Florissant, Mo. 63034
(314) 355-5455

*LINDEMAN SHEPHERDS (H,CO.T.)
Linda Newman
10324 Seaton
St. Louis, Mo. 63137
(314) 869-7714

*BLACK OAK'S SHEPHERDS (P)
Marcia Hadley
2245 Compi Lane
Arnold, Mo. 63010
(314) 296-3126

*MARI-FIORI SHEPHERDS (P)
Marilee Wilkinson
3138 East Romaine Creek Road
Imperial, MO 63052
(314) 326-3207

*BRIDGENHAUS SHEPHERDS (P,S,OB.T.)
Don and Helene Bridges
3656 Steins
St. Louis, Mo. 63116
(314) 353-0445

*OLRAC KENNEL (P,S,OB.T.)
Bud and Louise Leistner
9101 Arvin Place
St. Louis, Mo. 63123
(314) 631-7355

*CARALON KENNELS (P,S,A)
Helen Sherlock, Pat Parsons,
and Larry Duerbeck
Rt. 1 Box 69-E
Labadie, Mo. 63055
(314) 742-5432

*RR BAR RANCH (P,S)
Rosalind North
5428 Liberty School Road
Hillsboro, Mo. 63050
(314) 586-6040

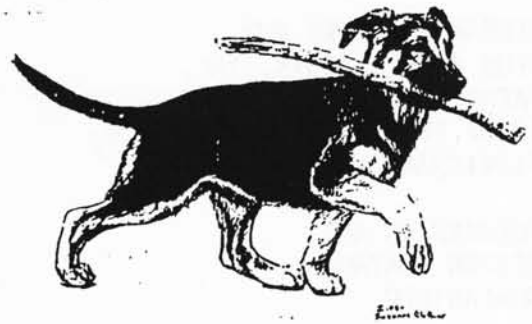
*GRAUENHOF KENNELS (P,S)
Joyce Gray
6004 Peirce Lane
Godfrey, IL. 62035
(618) 466-8351

*RUFHAUS SHEPHERDS (P,S)
Fran and Wally Ruoff
3619 Blackberry Lane
Imperial, Mo. 63052
(314) 296-7104

A=ADULTS H=HANDLER P=PUPPIES S=STUD CO.T.=CONFORMATION TRAINING
OB.T.=OBEDIENCE TRAINING B.K.=BOARDING KENNEL

PAID ADVERTISEMENT

PUPPY CLASS



Wednesdays 8-9:30 pm

Starting April 12

\$30 for a 6 week course

Held at the Bevo-Long School
5028 Morganford

Call Alice @ 741-4353



GERMAN SHEPHERD DOG
CLUB OF ST. LOUIS, INC.
DAPHNE SZCZUKA, EDITOR
14557 FOXFORD CT.
FLORISSANT, MO 63034

FORWARDING AND
RETURN POSTAGE
GUARANTEED

ADDRESS CORRECTION
REQUESTED

BULK RATE

U.S. POSTAGE PAID

ST. LOUIS, MISSOURI

PERMIT NUMBER 3917

Marilee Wilkenson
3138 E. Romaine
Imperial, MO 63052

FRAN FOSTER
ALL-BREED HANDLING
1944 WILLIAMS CREEK ROAD
HIGH RIDGE, MO 63049
(314) 677-3298