



# Wag N' Tongue



DSC  
1986



HONORABLE MENTION  
1984  
SECOND RUNNER-UP  
1985

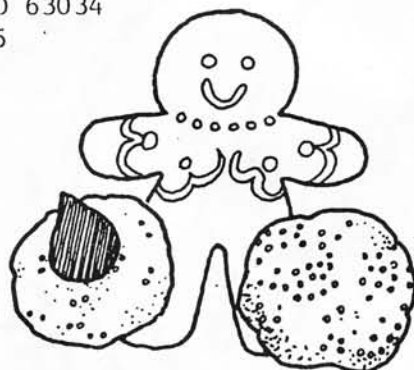
WAG 'N' TONGUE IS THE OFFICIAL  
PUBLICATION OF THE GERMAN SHEPHERD  
DOG CLUB OF ST. LOUIS, INC.

PUBLISHER: GSDC OF ST. LOUIS

EDITOR: Daphne Szczuka  
14557 Foxford Court  
Florissant, MO 63034  
(314) 355-5455

STAFF:

Linda Newman



OFFICERS OF THE CLUB

President\*\*\*\*\*Larry Duerbeck  
Vice-President\*\*\*\*\*Mark Gilmore  
Recording Secretary\*\*\*\*\*Alice Becker  
Treasurer\*\*\*\*\*Fran Ruoff  
Correspondence Secretary\*\*\*\*\*Linda Newman  
10324 Seaton  
St. Louis, MO 63137

BOARD OF DIRECTORS

Harold Beckham  
Judy Deane  
Elaine Harbison  
Alice Krueger  
Don Krueger  
Lydia Neun  
Marilee Wilkinson



FEATURE WRITER:

Marilee Wilkenson



The purpose of the club shall be to encourage and promote the breeding of purebred German Shepherd Dogs and to do all possible to bring their natural qualities to perfection, to urge members and breeders to accept the standard of the breed as adopted by the German Shepherd Dog Club of America and approved by the American Kennel Club as the only standard of excellence by which the German Shepherd Dog shall be judged. To do all in its power to protect and advance the interests of the breed by encouraging sportsmanlike competition at dog shows, obedience trials, and tracking tests, to aid with every possible means in demonstrating the German Shepherd Dog's conspicuous ability as a companion, Red Cross, police, hearing, rescue dog and guide dog for the blind. To conduct shows, obedience trials, demonstrations, etc. under the rules of the American Kennel Club, to publish literature and periodicals in the interests of the German Shepherd Dog. The club shall not be conducted or operated for a profit or remainder or residue from dues or donations to the club shall inure to the benefit of any member or individual.

=====

THE OPINIONS OF WRITERS OR ADVERTISERS  
IN THIS PUBLICATION DO NOT NECESSARILY  
CONSTITUTE THE VIEWS OF THE GERMAN  
SHEPHERD DOG CLUB OF ST. LOUIS, INC.

=====

Regular Club meetings are held every month on the third Friday, except in August (annual Barbeque) and December (Annual Christmas Party) at 8:00 P.M. The meeting place is the Brentwood Recreation Center, 2505 S. Brentwood, unless otherwise noted.





Hi, Folks! For those of you who haven't heard, I am the new editor of the WAG-N-TONGUE. If anyone has some original (or some not so original) material you would like to see in the newsletter, just drop it in the mail to me.



Daphne Szczuka, Editor  
14557 Foxford Court  
Florissant, MO 63034

A special thanks to Ken and Marie Cunningham for helping me move the WAG-N-TONGUE to my house, and Linda Newman for Helping with this, my first, issue.

Have a Merry Christmas and a Happy New Year!



# TABLE OF CONTENTS

Table of Contents.....	1
Ad.....	2
Christmas Party Notice.....	3
GSDC of St. Louis Regular Meeting Minutes.....	4
Ad.....	6
Ad.....	7
GSDC of America Chairman Reports.....	8
Ad.....	10
Ad.....	11
Ad.....	12
Verein Fur Deutsche Schaferhunde by Marilee Wilkinson * .....	13
Obedience Training Ad.....	22
Conformation Training Ad.....	23
Win-Place-Show.....	24
Win-Place-Show Form.....	26
GSDC of America Application-Superintendents Names-WAG-N-TONGUE Rates	
Breeder's Page.....	Back Cover





Wishing you  
a Cheery  
Holiday Season  
and a  
Happy New Year!

The Wag 'N' Tongue  
Staff





WE ARE HAVING A CHRISTMAS  
PARTY!

Tuesday, December 9

At Vacovelli's

Dunn and Lindbergh

7:00 pm Cocktails

8:00 pm Dinner

\$10.50 and Cash Bar

Call Larry By Dec. 7 for Reservations (RSVP)

REGULAR MONTHLY MEETING

September 19, 1986

*Approved  
as read*

The regular monthly meeting of the G.S.D.C. of St. Louis, Inc. was called to order by President Duerbeck at 8:10 p.m. at the Brentwood Recreation Center.

Pat Parsons moved that the educational program be presented first. The motion was seconded by Marilee Wilkinson and passed. Scootie Sherlock introduced George Collins who spoke on the Working Dog Association.

The minutes of the July 18, 1986 meeting were approved as read.

The Treasurer's report was approved as read.

Committee Reports

Education: The educational program for the October meeting will be Dr. Kolota discussing bloat in dogs. The November program will probably be on the equestrian center.

Training: Linda Newman reported it was the second week of classes and that there were lots of dogs.

Wag N Tongue: Sharon Dieckmann stated that since she is not receiving articles, the newsletter will be bimonthly. She also announced that it was time to pay for ads on the breeders' page.

Marcia Hadley volunteered to handle the Royal Hecht awards.

Alice Krueger announced that the all breed confirmation class began September 17, 1986. She noted that the class netted \$265.50.

Specialty: Fran Ruoff reported that it will be a 4 point major. Alma Claeys will serve as Hospitality Chairman and Daphne Szczuka will be chief ring steward. There are still some trophies that need to be covered.

John Hoffmann and Scott McNabb were introduced as new members.

The guest list was read.

Canine Corp: Nancy Kearney announced that there were six nominations this year for Canine Corp awards.

Old Business

Bud Leistner reported the picnic cost the club \$20.05.

There was discussion on the painting of the ring equipment. John Hoffmann moved that members of the club meet on October 19, 1986 at his home to paint the ring equipment. The motion was seconded by Mark Gilmore and passed.

New Business

Marilee Wilkinson announced that her friend in Germany had sent her the results of the breed show there.



Bill Claeys has made a picture of the club's logo which will be on display at the specialty.

It was announced that Helene Bridges is Ways and Means Chairman and will have a booth at the show.

Janet Wood brought to the club's attention that companies plan their advertising budgets for the year and that perhaps we should make our request at the appropriate time and not ask for their assistance each time we have a show. There was also discussion of setting prices for ½ page and full page ads.

Scottie Sherlock mentioned the possibility of Walter Martin holding a seminar in St. Louis on March 28 and 29, 1987. Two other clubs along with the G.S.D.C. of St. Louis would share his expenses. George Collins volunteered to bring Mr. Martin to St. Louis from Chicago. It was estimated that \$400 would cover transportation expenses.

Nancy Kearney moved that the G.S.D.C. of St. Louis join the Working Dog Association providing that club members could participate in seminars and other events without paying extra (ie, individual memberships). The motion was seconded by Pat Parsons and passed unanimously.

Scottie Sherlock moved that the G.S.D.C. of St. Louis combine a seminar and evaluation on March 28, 1987 to be held jointly with the other clubs. The motion was seconded by Nancy Kearney and passed unanimously.

President Duerbeck discussed the possibility of renting a rec room for the club's Christmas party.

The raffle raised \$32.00.

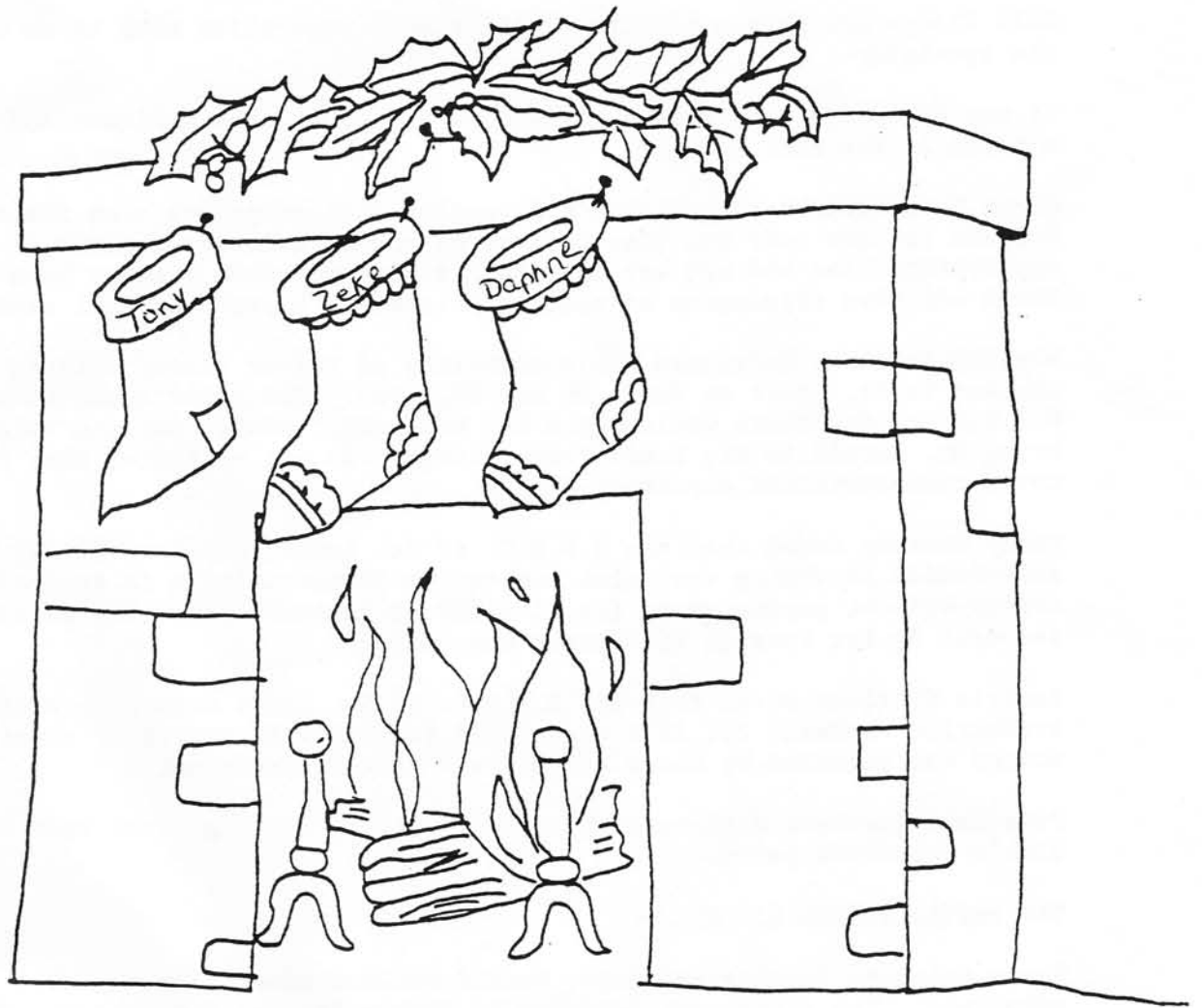
There being no further business, Harold Beckham moved that the meeting be adjourned. The motion was seconded by Daphne Szczuka and passed. The meeting was adjourned at 10:30 p.m.

Respectfully submitted,



Alice Becker  
Recording Secretary





*Best wishes for the holidays and  
Happiness throughout the  
New Year*

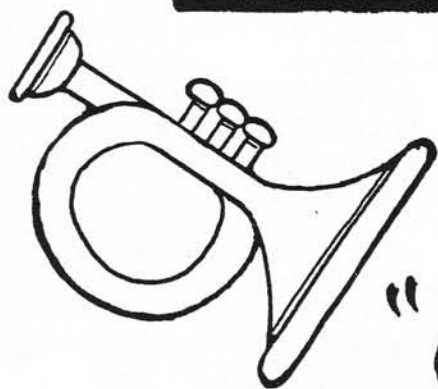
Daphne, Tony, and Zeke

The Szczukas

ANDAKA KENNELS



# CONGRADULATIONS!



to:

"CHAMPION"



## ESSENCE of WINDYRIDGE

AND PROUD OWNER

## LORETTA SCHWARTZBECK



from:

### CHIP CIN'S

### BO & ROSE

\* AKC PENDING



# GERMAN SHEPHERD DOG CLUB OF AMERICA, INC.

MEMBER OF AMERICAN KENNEL CLUB

MISS BLANCHE L. BEISSWENGER · 17 WEST IVY LANE, ENGLEWOOD, NEW JERSEY 07631

## PARENT CLUB REPORTS FOR REGIONAL CLUBS

Release #175

November 1, 1986

(Annual)

Helen Fisher, President

Since I have been writing my monthly column, most of you are aware of what the Board is doing, and how we are progressing.

Because of the lame-duck session last year, I wasn't able to start my programs until January, 1986, so we've really accomplished a lot in nine months. With the AKC approval of a return to our old By Laws we'll be able to start work right after each National again.

Each Committee will give you a written report, so I will not detail each Committee's progress. I will only say that my entire Board has given me 100% cooperation. We've had our disagreements, lots of discussion and a vote that settled the question.

We have formed some new Committees that have been very active, and some of the established Committees have gotten a "second wind" and really produced some new material and ideas.

All in all, I'm very pleased and happy to have worked with such a great Board. I'm proud of our Club. I think it is the most active and productive Breed Club in the USA, and it is a privilege to be your President.

\*\*\*\*\*

REGIONAL CLUB LIAISON

(Annual)

Blanche Beisswenger, Chps.

At the July Board Meeting, enacted was a new policy for regional clubs. There was much concern that regional clubs were soliciting other breeds for match shows, obedience classes, et cetera. The regional club chairperson was instructed at the April Board Meeting to draw up a workable policy, and that this be disseminated to all our affiliated regional clubs. In addition, there was concern that our Working Dog Association was permitting other breeds in the schutzhund trials. We had been getting requests for schutzhund pins for non-German Shepherd Dogs from the owners. This the Board several years ago turned down.

The policy adopted is as follows: "The Board suggests that regional clubs affiliated with the GSDCA, Inc., and currently holding AKC sanctioned match shows and point specialties do not allow other breeds to participate in fun matches with German Shepherd Dogs. However, if finances are a problem, other breeds could be accepted for training classes, but certificates and awards should be limited to German Shepherd Dogs. This also pertains to temperament tests; no parent club certificates are board approved to be given to other breeds. As a specialty club it is also questionable to award regional club certificates. It is understood that other breeds may not participate in AKC events.

"For Schutzhund Clubs under the WDA status, score sheets should only include German Shepherd Dogs. Certificates, if given, should not be on official GSDCA-WDA insignia for the other breeds. Other breeds should not participate under GSDCA-WDA schutzhund trials. A separate trial might be considered following the official GSDCA-WDA trial but not under its sanction. Only GSDCA schutzhund pins are given to German Shepherd Dogs at GSDCA-WDA trials if the scores are qualifying, and a photostat of the score sheet is forwarded to Miss Beisswenger. So many of our members move that checking the roster doesn't insure the pin getting to the recipient, but a letter from the member directly to this

office insures we have the correct address. Pat Melasco sends the official trial results to me, which is similar to the AKC Gazette wins furnished by the AKC."

As you know, Regional Club Liaison was formulated for communication between the Parent Club and the regional clubs. Chairperson reports are sent to the clubs for dissemination to their memberships. While it's not mandatory that regional clubs send newsletters to this office, it is advisable to do so, as many good ideas in the newsletters may be known to the Parent Club. At one time the chairperson reports were sent to the club editors and the secretaries for those clubs without newsletters. This was changed some years back, because many of the editors discontinued their positions, and the new editors if there were new ones did not forward their names and addresses. The clubs did not receive the communications from the Parent Club as a result. The current policy is better in that the club secretaries are usually up to date in our files. It is another step for them to forward to their editors for publication, but is actually no further step when one considers that clubs without newsletters must disseminate the material to their memberships ie, via meetings, bulletin boards, etc.

Many regional clubs which discontinued their newsletters are again in operation. The GS Guardian is a good example of a club which has resumed operations in this area. The Atlanta club is to be commended for this up-to-date club periodical. It has many interesting articles including President Carmen Battaglia's monthly Topside Topics.

The Delaware Valley GSDC this year resumed its newsletter featuring many interesting items including an article on the U.S. rabies epidemic which all pet and show dog owners want to be concerned, four cases reported in 1981 and 199 for the first five months of this year.

\*\*\*\*\*

#### OBEDIENCE

(Annual)

Betty Radzevich, chps.

I have tried to make sure competition at our National Specialty is comparable to that of conformation. This year trying sod in an outdoor ring, to make footing similar for all those competing and so that it is relatively quiet for the working dogs. Asked for comments and recommendations for the future but only had two people respond to our request.

Since Obedience Competition is falling, we are going to go to two judges in future competition unless we find ourselves with an overwhelming entry in the future.

Please participate and give us your comments and suggestions, in writing whenever possible. We honestly want to represent you as fairly and completely as we can.

Note: Betty decided not to continue with this committee, and the Board selected Don Arner as the new obedience chairperson.

\*\*\*\*\*

#### FREE COMMITTEE

Joan Ford, Chps.

Members: JoanFord, Chairman; Mickey Gingrich, Kathy Potter, Gary Staser, and Inge Vyprachticky

The Free Committee held 3 meetings, with a total time spent by each member of 28 hours.

Accomplishments: Proposals were presented to the Board at the July, 1986 meeting. 2 proposals were accepted, others are under consideration.

Passed: regions changed from 9 to 6 due to low entries.

Passed: Classes are to be divided by sex as follows:

Futurity - Junior (6 to 9 months)

Teenage (9 to 12 months)

Intermediate (12 to 15 months)

Senior (15 to 18 months)

Maturity - Junior (18 to 24 months)

Senior (24 to 30 months)

\*\*\*\*\*

# JUDEEN

WAY TO GO!

WHAT A WEEK!

## CLASSY

9<sup>th</sup> Open Bitch at Nationals out of 56!

## ZACK

St. Charles K.C. > W.D., B.O.S., B.O.W.  
St. Louis Dog Breeders > 3<sup>rd</sup> Open Dog



## SHADOW

St. Charles K.C. > 1<sup>st</sup> Novice Bitch  
St. Louis Dog Breeders > 1<sup>st</sup> Bred-By  
Handled both days by Julie Harbison  
Good job, Julie!

Judy, Fran, Marcia & Doc, too

Love  
10. Anja + Marilee



# *Best Wishes*

FOR THE HOLIDAY SEASON  
AND FOR EVERY DAY OF THE COMING YEAR

*Ken, Marie, and Doris*

*The Cunninghams*

WINGAIT KENNELS



WONDER WOMAN ---- WE THANK YOU

ST. LOUIS' OWN SUPER-HANDLER--- FRAN FOSTER

*Finished our brother-sister littermates from the*

IRISH LITTER OF ANDREL



*in one weekend and demolished the Oklahoma City Circuit*

Sat. 11-8-86 Oklahoma City K. C. ANDREL'S BRIDGET O'FLYNN  
4 pts. under BOB SLAY to finish

Mon. 11-10-86 Town & Country K. C. SHAMROCK OF ANDREL (ROCKY)  
3 pts. under REX VANDEVENTER to finish

*that makes three CHAMPIONS so far from the*

IRISH LITTER OF ANDREL



*and more to come*

*watch for PEDDACRES-ANDREL'S MOLLY MCGEE and for MIGAR'S KELLI  
OF ANDREL---- ready to start soon*

Proud Pop: Sel. Ch. Stuttgart's Sundance Kid, ROM  
Proud Mom: Our Own Ch. Aida of Tucker Hill

Proud Owners/Breeders

ANDREL SHEPHERDS

Ellie and Andy Werner

P.S. Cheers to their litter brother in Canada---Multiple Best In  
Show, Sel. Can. Ch. and U.S. Ch. STUTTGART'S ROONEY OF ANDREL,  
on his son, Best Puppy at the '86 Canadian National under  
Connie Beckhart



## VEREIN FÜR DEUTSCHE SCHÄFERHUNDE

by Marilee Wilkinson

HUH? What's that, you ask? A new recipe, an exotic new sports car, a new restaurant in St. Louis, a new nightspot on Laclede's Landing? Alright, folks. All kidding aside. It's also known as the "SV". It's the "German" German Shepherd Club. Every year the SV conducts a breed championship show for all German Shepherd Dogs in Europe. This is comparable to our National Specialty.

Their rules for winning a "Select" are much different than ours. Following is a brief explanation of and information on the Breed Show and their requirements. In Germany, GSD's are judged in three main classes only:

- I Youth Class (Age 12-18 months)
- II Young Dog Class (Age 18-24 months)
- III Utility Dog Class (Dogs must be older than 2 years and must have one Working Qualification--at least a Schutzhund I)

In the Utility Dog Class, dogs must have been graded "Excellent" or at least "Very Good" at a "Landsgruppen Show" or a previous Championship Breed Show. All dogs and bitches are tested for their courage before they may enter their class. If they fail this test, they can't receive the higher gradings Very good (SG), Excellent (V), Excellent Select (VA). This test is done on ground that is strange to the dog with a strange helper (criminal/agitator). Dogs that get the grade "vorhanden" (courage present) will be put at the end of the (V) grading as a unit. Dogs that get the grade "nicht genugend" (not enough courage) will be put at the end of the (SG) group as a unit. The judging of each class starts with the dog being examined while he stands. The judge very carefully studies the anatomy, the construction and the character of

the dogs. The character of the dogs is tested very carefully and the judge will always observe the dogs in this respect. There will also be a test for gun shyness in the ring. When this judging has finished, the dogs will have to start trotting. The functioning of the bones, muscles and the firmness of the ligaments and the joints, rhythm of movement, the strength and the perserverance as well as the liveliness of the dog are now very carefully examined and are of great importance to the judges. The animals are subjected to a hard physical and psychological test.

Only dogs preselected in Selection Class Ila and possessing at least a SchH II training mark can be asmitted into the Selection Class (v) Excellent (comparable to our "Select" title won at the Nationals). These dogs are Europe's best Utility Dogs. These dogs have been bred for Selection and performance. Dogs that are to be admitted for the second time into the (V) class must possess a SchH III Title. In addition, the dogs must possess a complete and perfect set of teeth. Utility Class Dogs can only receive a (V) if they are over 3½ years old and preselected.

There is a special class for Active Herding Dogs. After all, that's what the GSD was originally bred for. This is for normal coated GSD which are in active herding service or carry Herding Trial qualifications (HGH) and who are at least 12 months old.

In the Progeny groups are puppies and adults of the often used stud dogs to see if the quality of dogs he is producing is good or bad. It also shows which good and bad genetic traits have been inherited by their offspring. It helps to see if the confidence shown in them as stud dogs has proved to be right and we can learn if they've helped to improve our breed.

That's not quite what we expect of our dogs at our Specialty, is it? How many of our dogs would qualify in Germany? Probably as many as the German dogs or German bloodline dogs that make it in our breed rings.

This information was supplied to me by my penfriend in Germany, Claudia Künsting. Also some information which I have picked up along the way in my German Shepherd Dog educational literature and experience. I hope that we have enlightened some of you on the German Way.

\*Landsgruppen Show--regional GSD breed show



# Results of the SV - Championships - Breed - Show

## I Utility Dog Class:

World

- Champion

VA 1



Quanto von Arminius

Selection Class Excellent 1!

"birthday": 28. 11. 1981

breeder: H. Martin,  
Viernheim

owner: C. Schweibert,  
Im Mittelzelle 5-1,  
68333 Waghäusel

Training mark: SchH3, JP3 FH, Selection Class Ia

→ he was great, in his Progeny Class started 59 (!) very good dogs!

father: Xaver v. Arminius      mother: Palme vom Wildsteigerland

(Uran v. Wildsteigerland's mother, too)

2nd:

VA 2



Statz vom Hasenborn

S. C. E 21 VA 2

"birthday": 29. 6. 81

breeder: W. Naven

owner: D. Hofmann,  
Luisenstraße 52,

6800 Mannheim 24

T.U.: SchH3, JP3, FH ; Selection Class IIa

⇒ 36 very good dogs in his Progeny Class

father: Dux von der Wienerau

mother: Yanka vom Hühnegrab

3rd:

Eike vom Kirschtal

S.C.E 3 (VA3)

birthday: 26. 12. '83

breeder: K. Füller, Stettin

owner: M. Göbl,

Schildsburg S,

S.12-1 Wildsteig

(Uran's owner, too)

T.M.: SchH3, FH, S.C. Ia

⇒ no Progeny Class, last years young dog class best

father: Uran vom Wildsteiger Land!!

mother: Lilla v. Kirschtal



Rambo vom Reststrauch

S.C.E 4 (VA4)

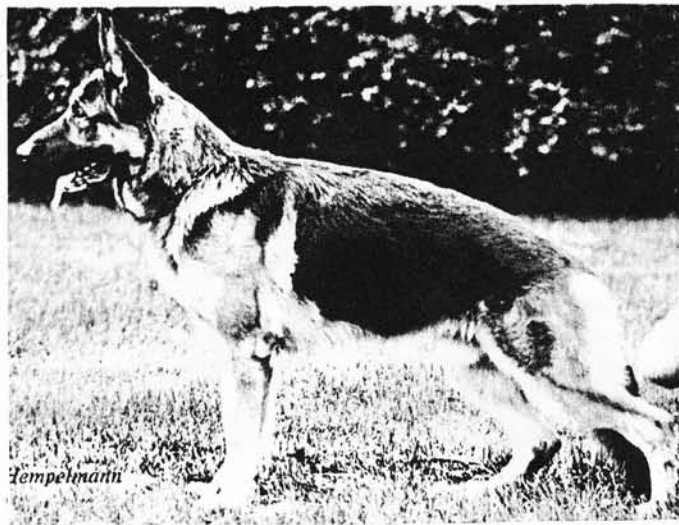
birthday: 29. 12. '82

breeder/owner:

G. Köllges, Steinfeldstr. 65

40 50 Mönchengladbach

⇒ the dog is in Italy



4th

picture 1984

T.M.: SchH3, S.C. Ia

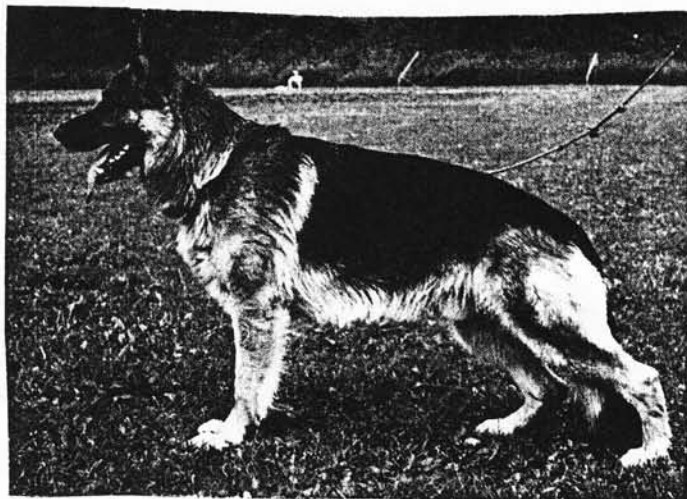
⇒ 12 days in Progeny Class, 1984 best in young dog Class

father: Dingo vom Haus Gero

mother: Landra von Arminius



5th:



Tell vom Großen Sand

S.C.E. 5 (V75)

birthday: 4. 5. 81

breeder: R. Schmitt, Saarbus

owner: R. Entler,

St. Josef 23,

6650 Jägersburg

Training mark: SchH3, S.C. Ila

=> 23 dogs in Progeny Class, last year's second!

father: Sonny vom Budener-Land

mother: Jenny v. Großen Sand

6th



Hardy vom Fournier-

mühlenbach (V76)

birthday: 17. 1. 83

breeder: H. Münster, Uetersen

owner: J. Müller,

Petersburg 16,

2371 Wübbel

Training mark: SchH3, JP3, FH; S.C. Ia

=> no Progeny Class, last year's 11th

father: Dingo vom Haus Giers

same as Rambo v. Restkrauch (V74)

mother: Diesel v. Fourniermühlen-  
bach



7th

Apoll vom Fliederbusch

S.C.E 7 (V97)

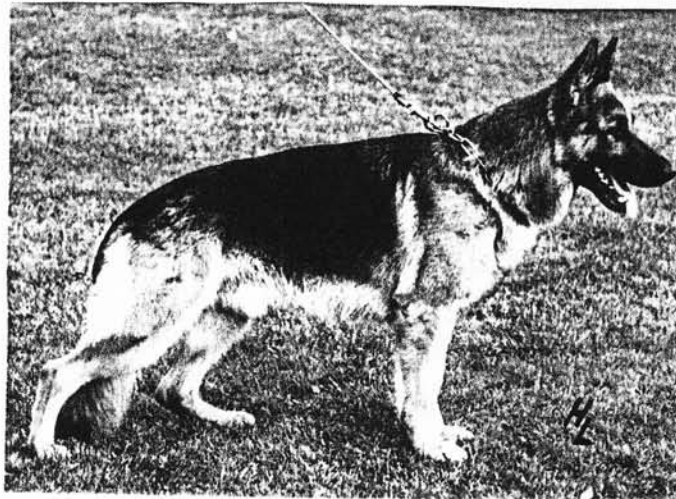
"birthday" 18.2.'82

breeder: K. Schuch,

Abt.-Willibald-Str. 22,

8354 Mellen

owner: mine



Training mark: SchH 3

S.C. Ia

=> 33 days in Progeny class, last year's 10th

father: Ex vom Schlumborn

mother: Tina vom Cober-Stein

Argus vom Gromachtal

8th

"birthday": 6.10.'81

breeder: D. Kern

owner: R. Mathiesen,

Winterhalde 4,

7170 Schwebisch-Hall



Training mark: SchH 3

S.C. Ia

=> 20 days in Progeny class, last year's 13th

father: Vax von der Wienerau

mother: Cilly vom mittelfränkischen  
Land

gth



Yimbo vom Wildsteiger Land

S.C.E.S (V.A.S)

birthday: 7.5. '83

breeder: M. Göbl, Wildsteig

owner: G. Hörth, Heubergweg 22,  
8105 Farchant

T.M: SchH3, FH, S.C. I.a

=> last year's 6th Excellent & behind 13 Excellent Selection Dogs  
no Progeny Class 1 Group

father: Ulan vom Wildsteiger Land

mother: Driev. Klingenhof

10th



Karo vom Asbacher Land

S.C.E 10 (V.A.10)

\* 15.2.1984

breeder: G. König

owner: F. Stenner, Heppingserbach 39,  
5870 Hemer

SchH3, JP3, FH, S.C. Ia

=> last year 5th "very good" in young dog class

father: Pütz von Arjakis

mother: Jenny vom Asbacher Land

These are the 10 dogs with the grade : excellent selection  
(Vorzüglich Auslese), the best dogs of Germany / Europe  
- there were still 50 or 60 dogs judged with the grade "excellent".

Please excuse the different or old pictures : I had to search for  
this information in several journals!

# Utility dog class (bitches):



Vina v. d. Baiertalerstraße 1539837. Züchter: Manser Willy, Wiesloch; Eigentümer: Engel Monika, Prüßstr. 81a, 1000 Berlin 42.



\*Fina v. Arminius, 1592050. Züchter: Martin Hermann, Viernheim; Eigentümer: Bork Erwin, Falltorstr. 12, 6306 Langgöns-Niederkleen.



Senta v. Basilisk, SHSB 379811. Züchter und Eigentümer: Rölli Josef, Waldeckweg 29, CH-4102 Binningen; Halter: Rotzler Helmuth, CH-4208 Nunningen.

UA1 Pische von Bad-Boll

UA2 Ranni vom Donauland  
(no picture)

UA3 Vina v. d. Baiertalerstraße

UA4 Palme von Bad-Boll

(Uran Wildsteiger first-daughter)  
(no picture)

UA5 Fina von Arminius

UA6 Xilla vom Trienzbachtal

UA7 Xenta vom Fiemereck

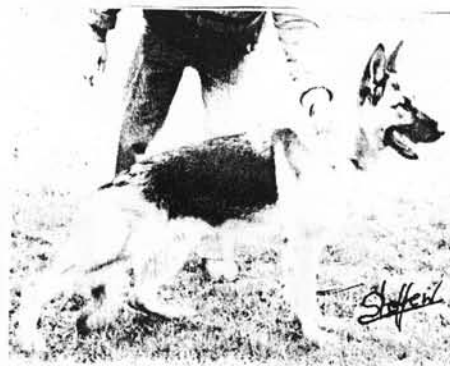
UA8 Moya v. Rostbach  
(no picture)

UA9 Senta v. Basilisk

(Quando v. Arminius-daughter)



\*Xilla v. Trienzbachtal, 1554724. Züchter und Eigentümer: Bucher Leopold, Fahrenbacher Str. 40, 6950 Moosbach Sattelbach; Halter: Költers Werner, Hauptstr. 20, 6751 Niederkirchen.



\*Xenta v. Fiemereck, 1588216. Züchter und Eigentümer: Steffen Martin, Im Exenhau 3, 4983 Kirchlegern 1; Halter: Sudmeier Willi, Am Kohlgraben 18, 4950 Minden.

**G.S.D.C.**

**NOVICE**

**DOG**

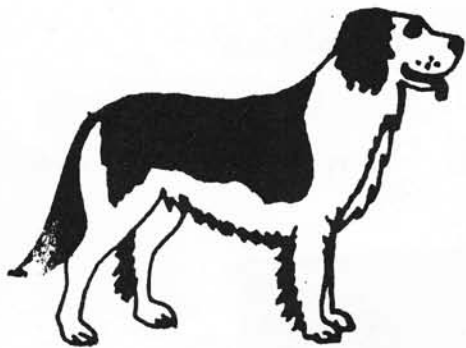
**OBEDIENCE**

**CLASSES FORMING NOW**

**CALL ALICE AT**

**741-4353**

**...ALL BREEDS...**





# **CONFORMATION CLASSES**



## **ALL BREEDS**



**LEARN TO SHOW YOUR OWN DOG !!**

**TAUGHT BY TOP PROFESSIONAL HANDLERS**

**ALL PHASES COVERED - - - -**

**FROM ENTERING THE DOG - - - - GAITING THE DOG  
THROUGH GROOMING TECHNIQUES**



**CALL 741-4353**





VASHTA vom SPEZIALBIJUT

Owner: Deborah Clark  
Sire: Quell Vonder Quellenhohe  
Dam: Isar vom Steinacker  
Temperment Test  
The Samoyed Club 6-8-86  
Judge: Carl Herkstroeter  
TT

\*\*\*\*\*

EZEKIEL OF ELSI-MOR,CD,TC

Owner: Daphne J. Szczuka  
Sire: Brutus of Elsi-Mor  
Dam: Shannon of Elsi-Mor  
St. Charles Kennel Club 9-20-86  
Judge: Mr. Les Kodner  
American Bred Dog - 1st Place

\*\*\*\*\*

St. Louis Dog Breeder's Association 9-21-86  
Judge: Mr. Joe Tacker  
American Bred Dog - 1st Place - RWD

\*\*\*\*\*

G.S.D.C. of St. Louis, Inc. 10-5-86  
Judge: Mr. William Oxandale  
Open A - 2nd Place - Score 191 - 1st Leg

\*\*\*\*\*

Capitol Canine Training Club of Springfield 10-11-86  
Judge: Mrs. Patricia Krause  
Open A - Score 184 - 2nd Leg

\*\*\*\*\*

BLACK OAK'S SHADOWS OF JUDEEN

Owner: Marcia Hadley  
Sire: CH. Caralon's Nicholas of Judeen,CD  
Dam: Witthaus First Lady,T.C.  
St. Charles Kennel Club 9-20-86  
Judge: Mr. Les Kodner  
Novice Bitch - 1st Place

\*\*\*\*\*

St. Louis Dog Breeder's Association 9-21-86  
Judge: Mr. Joe Tacker  
Bred By Exhibitor - 1st Place

\*\*\*\*\*





CAPTAIN ZACH vom TICHBRU

Owner: Wally and Frankie Ruoff  
Sire: CH. Caralon's Trefferhund of Judeen  
Dam: Caralon's Phantom Image  
St. Charles Kennel Club 9-20-86  
Judge: Les Kodner  
Open - 1st Place - Winners Dog - Best of Winners  
Best of Opposite Sex

\*\*\*\*\*

ANDREL'S BRIDGET O'FLYNN

Owner: Andy and Ellie Werner  
Sire: Select Am & Can CH. Stuttgart's Sundance Kid  
Dam: CH. Covy's Aida of Tucker Hill  
G.S.D.C. of St. Louis, Inc. 10-5-86  
Judge: Dr. Robert Tichenor  
Open Bitch - 1st Place - Winners Bitch - Best of Winners  
Best of Breed - 4 Point Major

\*\*\*\*\*

Oklahoma City Kennel Club 11-8-86  
Judge: Bob Slay  
Open Bitch - 1st Place - Winners Bitch - Best of Winners - 3 Point Major  
"Champion"

\*\*\*\*\*

SHAMROCK OF ANDREL

Owner: Andy and Ellie Werner  
Sire: Select Am & Can CH. Stuttgart's Sundance Kid  
Dam: CH. Covy's Aida of Tucker Hill  
Mid Del Tinker Kennel Club 11-9-86  
Judge: Peggy Douglas  
Open Dog - 1st Place

\*\*\*\*\*

Town & Country Kennel Club of Oklahoma City 11-10-86  
Judge: Rex Vandeoenter  
Open Dog - 1st Place - Winners Dog  
"Champion"



OWNER'S NAME \_\_\_\_\_

DOG'S NAME \_\_\_\_\_

SIRE \_\_\_\_\_ DAM \_\_\_\_\_

SHOW \_\_\_\_\_ JUDGE \_\_\_\_\_

DATE \_\_\_\_\_ CLASS ENTERED \_\_\_\_\_ PLACING \_\_\_\_\_

OBEDIENCE SCORE \_\_\_\_\_ TITLE COMPLETED \_\_\_\_\_

MAIL TO: SHARON DIECKMANN, 3925 CORDES DR., ST. LOUIS, MO 63125

=====

OWNER'S NAME \_\_\_\_\_

DOG'S NAME \_\_\_\_\_

SIRE \_\_\_\_\_ DAM \_\_\_\_\_

SHOW \_\_\_\_\_ JUDGE \_\_\_\_\_

DATE \_\_\_\_\_ CLASS ENTERED \_\_\_\_\_ PLACING \_\_\_\_\_

OBEDIENCE SCORE \_\_\_\_\_ TITLE COMPLETED \_\_\_\_\_

MAIL TO: SHARON DIECKMANN, 3925 CORDES DR., ST. LOUIS, MO 63125

=====

OWNER'S NAME \_\_\_\_\_

DOG'S NAME \_\_\_\_\_

SIRE \_\_\_\_\_ DAM \_\_\_\_\_

SHOW \_\_\_\_\_ JUDGE \_\_\_\_\_

DATE \_\_\_\_\_ CLASS ENTERED \_\_\_\_\_ PLACING \_\_\_\_\_

OBEDIENCE SCORE \_\_\_\_\_ TITLE COMPLETED \_\_\_\_\_

MAIL TO: SHARON DIECKMANN, 3925 CORDES DR., ST. LOUIS, MO 63125

=====

# BREEDERS LISTING

<u>ALDON SHEPHERDS</u> Don & Alice Krueger 2639 Fraber Dr. St. Louis, MO 63136 (314) 741-2639	P.S.OB.T.*	<u>MARI-FIORI SHEPHERDS</u> Marilep Wilkinson 12 Springer Woods Edwardsville, IL 63035 (618) 656-0674	P.
*****			
<u>BEL VISTA SHEPHERDS</u> Joe & Charlotte Poepping Rt. 2 U.S. Hwy 50 Lebanon, IL 62254 (618) 632-3662	P.S.*	<u>MONFORD KENNELS</u> Nick Mondelli & Charles Wolford P.O. Box 631 Fenton, MO 63026 (314) 343-7574	A.H.P.S.*
*****			
<u>BRIDGENHAUS SHEPHERDS</u> Don & Helene Bridges 3656 Steins St. Louis, MO 63116 (314) 353-0445	P.S.OB.T.*	<u>OLRAC KENNEL</u> Bud & Louise Leistner 9101 Arvin Place St. Louis, MO 63123 (314) 631-7355	P.S.OB.T.*
*****			
<u>CARALON KENNELS</u> Pat Parsons & Helen Sherlock Rt. 1 Box 69E Labadie, MO 63055 (314) 394-5970	A.P.S.*	<u>RUFHAUS SHEPHERDS</u> Fran Ruoff 3619 Blackberry Ln. Imperial, MO 63052 (314) 296-7104	P.S.*
*****			
<u>FOREST KNOLL KENNELS</u> Butch & Ruth Steifferrman R.R. 1 Box 120, Hwy 30 Robertsville, MO 63072 (314) 441-4559	A.H.P.S.T.*	<u>SHAROPA SHEPHERDS</u> Bob & Pat Kasten 12047 Trampe Hts. St. Louis, MO 63138 (314) 741-4027	OB.T.*
*****			
<u>HADORI SHEPHERDS</u> Ricky Kaner 3701 Coriander Dr. St. Charles, MO 63303 (314) 441-4559	A.P.S.*	<u>SHEPHERDS OF SIRIUS</u> Pam Teiber 5835 Schneider Rd. Imperial, MO 63052 (314) 942-9121	P.*
*****			
<u>JUDEEN SHEPHERDS</u> Judy Deane 5201 Windmill Road Imperial, MO 63052 (314) 464-1084	A.P.S.*	<u>STORM CLOUD SHEPHERDS</u> Fran Hellen & Sharon Plumpe 8524 Southwind Dr. Hillsboro, MO 63050 (314) 285-3419	P.S.*
*****			
<u>KARLHEIM SHEPHERDS</u> DOG HOUSE Tom & Holly Rose 6701 Antire Rd. High Ridge, MO 63049 (314) 677-3131	A.H.P.S.OB.T.*	<u>ZWEINUSS SHEPHERDS</u> Fran Foster 1944 Williams Creek Rd. High Ridge, MO 63049 (314) 677-3298	A.H.S.T.*
*****			

ADDRESS CORRECTION REQUESTED

GSDC of St. Louis, Inc.  
Daphne Szczuka  
14557 Foxford Court  
Florissant, MO 63034

BULK RATE  
U.S. POSTAGE  
PAID  
ST. LOUIS, MO  
PERMIT NO. 3917



THIRD CLASS

Daphne Szczuka  
14557 Foxford Ct  
Florissant, MO 63034

