

Wag'n Tongue

German Shepherd Dog Club of St. Louis, Inc.



January-February 2000

Wag'n Tongue

January/February 2000

Mission Statement

The object of the Club shall be to encourage and promote the breeding of purebred German Shepherd Dogs and to do all possible to bring their natural qualities to perfection, to urge members and breeders to accept the standard of the breed as adopted by the German Shepherd Dog Club of America and approved by the American Kennel Club as the only standard of excellence by which the German Shepherd Dog shall be judged. To do all in its power to protect and advance the interests of the breed by encouraging sportsmanlike competition at dog shows, obedience trials, and tracking tests, to aid with every possible means in demonstrating the Ger-



Photo Courtesy of Microsoft Publisher

man Shepherd Dog's conspicuous ability as a companion, war, Red Cross, police, herding, rescue dog, and lead dog for the blind. To conduct shows, obedience trials, demonstrations, etc., under the rules of the American Kennel Club, to publish literature and periodicals in the interests of the German Shepherd Dog. The Club shall not be conducted or operated for a profit, and no part of any profits or remainder or residue from dues or donations to the Club shall inure to the benefit of any member or individual.

man Shepherd Dog's conspicuous ability as a companion, war, Red Cross, police, herding, rescue dog, and lead dog for the blind. To conduct shows, obedience trials, demonstrations, etc., under the rules of the American Kennel Club, to publish literature and periodicals in the interests of the German Shepherd Dog. The Club shall not be conducted or operated for a profit, and no part of any profits or remainder or residue from dues or donations to the Club shall inure to the benefit of any member or individual.

Inside this issue:

Advertising Information	19
A Good Dog is Just That	12
AKC and Dateline	23, 24
AKC Point Schedule	10
Antifreeze Antidote	6
Breeder's Directory	18
Club Meeting Minutes	20, 21
Club Committees	4
Cool Web Sites	14
Crossword Puzzle	8
Educational Programs	3
Futurities 2000	3
GSDCA Application	9
GSDCA Board O' Gram	5
Living Love	10
Membership Information	2
Mission Statement	2
New Breed of Dog	11
Note From Liana	9
Obedience Information	3
Old Dog	6
Rainbow Bridge	7
Show Dogs	7
Specialty vs. All Breed	9
Stud Dog Listing	17
Treasurer's Report	21
What is a Title	6
Whelping Box	15
Word Search	13
Win Place Show	16

Club Hot Line Number (314) 725-8885

HOW TO JOIN THE GERMAN SHEPHERD DOG CLUB OF ST. LOUIS

In order to be considered for membership.

- *Turn in application
- *Yearly dues (\$20 for individuals & \$30 for families) must accompany application.
- *Applicant must attend three meetings after turning in application.

Don't forget to sign the Guest Book

The regular monthly meeting of the German Shepherd Dog Club of St. Louis, Inc. is held the third Friday of the month except in August and December. The meeting is held at the Brentwood Recreation Center., 2505 South Brentwood Boulevard at 8:00 p.m. Visitors are welcome.



Cover: Beautifully drawn by Marcia Hadley for use in the Wag'n Tongue.

Obedience Classes for All Breeds and Available to the

Novice Classes 8:00 P.M. - 9:30 P.M.

Next Novice class starts January 12 and runs for 10 weeks.

\$40.00 for Club Members
\$60.00 for Club Member's puppies
\$65.00 for non-members

Dog has already been through the Novice class and needs a refresher?

⇒ Refresher Class starts the 5th week of training for \$35.00

Puppy Classes 8:00 P.M. to 9:00 P.M.

Next Puppy class starts January 26, 2000 and runs for 6 weeks.

\$25.00 for Club Members
\$35.00 for Club Member's puppies
\$40.00 for non-members



Photo Courtesy of Microsoft Publisher



Photos Courtesy of Publisher's Task

Please Come Visit, Anytime!

Next classes will begin in January, 2000.
Classes are held every Wednesday
Nottingham School,
4915 Donovan Avenue
To register or for more information call:
Bud & Joann Leistner (636) 274-4519

2000 Futurity Judges and

NORTHEAST - Bay State GSDC
Borderland State Park, No. Easton MA
Sunday, June 18, 2000
Judge: Roberta Kindy
Alternate: Gail Hardcastle

MID-ATLANTIC - Southern New Jersey GSDC
Bob Bende Memorial Park Medford, NJ
Monday, April 10, 2000
Judge: Dave Rinke
Alternate: Tom Sherman

SOUTHEAST - GSDC of Raleigh
Raleigh Polic Club Facility, Knightdale, NC
Sunday, April 2, 2000
Judge: Neil Given
Alternate: Nanci Nellis

GREAT LAKES - GSDC of Central Indiana
Hamilton County Fairgrounds Noblesville, IN
Friday, May 19, 2000
Judge: Kathy Aubrey
Alternate: Delaine Thomson

MID-WEST - GSDC of St. Louis
Purina Farms, Grays Summit, MO
Sunday, April 9, 2000
Judge: Angie Stegner
Alternate: Fran Ford

SOUTHWEST - GSDC of Beaumont
Ramada Inn Limited, Beaumont, TX
Friday, April 21, 2000
Judge: Frank Fasano

Alternate:
Walter Falk

SOUTH PACIFIC - GSDC of Southern Nevada
Rotary Park, Las Vegas, NV
Saturday, April 15, 2000
Judge: Barbara Amidon
Alternate: Barbara Lopez

MID-PACIFIC - Diablo Valley GSDC
Los Gatos Creek Country Park, Campbell, CA
Friday, June 30, 2000
Judge: Cyndi Flautt
Alternate: Sandy Dancosse

NORTHWEST - GSDC of Oregon
Hammerle Park, West Linn, OR
Monday, May 29, 2000
Judge: Henry Dancosse
Alternate: Joanna Rand

Upcoming Educational

- ⇒ January Emergency Vet Clinics
- ⇒ February Royal Hecht Awards
- ⇒ March Genetics 101
- ⇒ April Obedience Training



Drawing by Marcia Hadley

"A dog teaches a boy fidelity, perseverance, and to turn around three times before lying down."
-Robert Benchley

Some days you're the dog; some days you're the hydrant."
-Unknown



Club Committee Job



The following is a listing of the various committees that exist within the Club and a brief job description. Serving on these committees is a great way to earn service credit. If you are interested in volunteering for or would like more information about the committee, contact your club president.

Auditing Committee: The President, with the Board's approval, appoints the auditing committee. It is the duty of this committee to audit the Treasurer's records and records of all committees handling club money. The committee submits the annual audit to the Board who makes the report available to the membership.

Cards and Flowers: It is the responsibility of this committee to send cards and or flowers when any member or immediate family member is ill or hospitalized, and in the event of a death in the immediate family.

Refreshments: The chairperson of this committee has the responsibility of bringing the coffee pot to regular meetings, also the paper, coffee, cream and sugar. The chairperson will ask volunteers to bring snacks.

This committee must also clean up the facilities used to serve the re-

freshments after the meetings.

Ways and Means Committee: This committee finds ways to provide funds for the club through various activities. Anyone with a fund raising idea should contact this committee.

Junior Handlers: The chairperson of this committee acts as a sponsor for our junior handlers. They help the junior members with the rules and regulations, fund raising and conducting their classes at shows.

Training Committee: The rules and regulations best describes the officers and member duties of this committee. A copy of the regulations and a Training Booklet can be obtained from the Training Committee.

Novelty Booth: This committee purchases such items that are needed or are in demand for resale to club members. These items are displayed at club meetings, shows or any club function where advisable.

ADIC-Annual Donation Investigation Committee: This committee researches the most worthy "Dog Oriented Organization" to which the club makes an annual donation of \$250.00. This committee reports

their recommendations to the Board by August of each year.

Wag-N-Tongue: The primary responsibility of this committee is the preparation and distribution of the club newsletter.

Library: The committee makes available at club meetings the books or magazines collected for lending to members.

Education: This committee is responsible for the educational programs presented at club meetings. They arrange for guest speakers or send for films that are of benefit to the club for educational purposes.

Property: This committee is responsible for overseeing and tracking the use and placement of the club's equipment. The club has a trailer for storage.

**YOUR CLUB NEEDS
YOUR HELP
AND SUPPORT!!**

1999 German Shepherd Dog Club of St. Louis Committees

Junior Handler Lee Trapp e-mail: Leetrapp@aol.com	Refreshments Nancy LaFata	Wag-n-Tongue Mary Tisius e-mail: mattgw@swbell.net	Cards and Flowers Linda Campbell
Obedience Training Lois O'Connor	Dogs for Blind/Police Bill and Dyan Harper e-mail: DWHarper@umsl.edu	Club Awards Marcia Hadley	2000 Futurity/Maturity Ricky Harrison e-mail: hadori@webtv.net
Puppy Matches Marcia Hadley	Conformation Training Ricky Harrison e-mail: hadori@webtv.net	Education Lee Trapp e-mail: Leetrapp@aol.com	Club Web Page Bill Harper e-mail: dvgame@anet-stl.com
Membership Liana New e-mail: Liana@prodigy.net	PEC Liana New e-mail: Liana@prodigy.net	Picnic Bud Leistner	Property Bud Leistner



Board-O-Gram
Approved by Dan Smith, President
Written by Ginny Altman

The fourth regular GSDCA Board of Directors Meeting was held on October 24, 1999 at the Quail's Inn in Del Mar, CA. It was preceded by The National Specialty, an Educational Meeting on the proposed revision of the German Shepherd Dog Standard, the Annual Membership meeting and the Victory Dinner.

Educational Meeting: Approximately one hundred members of the GSDCA attended the educational session on the proposal by the Ad-Hoc Standard Committee for a Proposed Revision of the Standard of the German Shepherd Dog on Wednesday, October 20, 1999. The report of the Ad-Hoc committee was available on Wednesday and again at this Annual Meeting. The January edition of the German Shepherd Dog Review will have an article covering this topic. Please watch for it!

Highlights of the Annual Membership Meeting

The Annual Membership Meeting of the German Shepherd Dog Club of America was held on Thursday, October 21, 1999 with 218 members present. Our current membership is 3890.

Regional Club Incentive Program: Ken Downing encouraged member clubs to participate in a subscription program that would benefit both their local club and the German Shepherd Dog Review. Puppy buyers and veterinarians were suggested as particularly appropriate recipients. See page 5 in the October Review.

The following dogs and owners have earned the 1999 Dual Award Members' Plaques:

Ch. Chlomaxi's Talitha, V D and L, Lois O'Connor and Carl Foster
Ch. Ken-Delaine's Carousel, PT Lew and Nicky Bunch
Ch. Merkel's Hearts are Wild, TD, CD Janice Page July
Ch. DeBurt's Different Drummer, UDX, NA Lori Nickeson
Ch. Carousel Farms Cosby Elkhill, PT Lew and Nicky Bunch
Ch. Charnbrooks Cinnamon Curl, HT, PT Lisa Miller and Mary Jane Lucine
GV Ch. Mar Haven's Color Guard, HT, PT Doris Estabrook and Carolyn Martello
Ch. Tenbenobe's Lady N Red Talimar, HT Jene and Isabelle Dupzyk, Ruby Hertz and Barbara Ross
Ch. JJ's Calendar Girl, CD Jaunita Williamson
Ch. Kingswood Tora Tora Tora, NA, TD, NAJ, OAJ, AXJ Julie Degen and Syd Mailberg
Ch. Excaliber's War Bird, CD Patti Wilson
Ch. Jecoda's Kipling, CD David and Connie Bissonnette
Ch. Utopia's Rivendell's Shindig, HT Linda Berkman and Kathy Aubrey
Ch. Kaimach Apfelsine Foxtro, CD Ursula Ling
Ch. Kubistraums Epic, HT, PT Verna Kubik
Ch. Kansten's Ducati, HT, PT Nancy Hubbell
Ch. Andaka Zederland's Keno, UD, HT, NA, OA Daphne Szczuka
Ch. Hi Lo's Wanna B, HT, PT Georgielee and Philip Miller and Kathy Roach
Ch. Noblecroft's Keystone Beauty, CDX, TD, UD Antoinette Faulkner
Ch. Landaleigh's Quedo Vuelo, CD Gail Cobleigh
Ch. Three D's O'My, CD, HT Deborah Levin
Ch. Kingswood's Saterhaus Destry, CD, PT Sally Haney
Ch. Lonestar's Colorado, CD Terri and James Sisk
Ch. Aljan GI Joe V Herrlichkeit, CD Rose Weistock
Ch. Anticipation of LeeRay, PT, HS Tonya Haney
Ch. Adrahaus Oliver V Lockleen, CD Diane Wegmann and Persus Taylor
Ch. Windwalker's Time Out, V D and L, CD Lois O'Connor
Ch. Sugarstone's Andre A, UDX, HS, NA, OA Mary Jane Lucine
Ch. Jo-San's Kismet's Flashfire, CD Beth Betancourt
Ch. Brier Hill's Mach One Hopes, CD, CDX Stormy Hope and Margaret Sherr
Ch. Castlehill's 'Cuz I Want To, HT Gail Hardcastle and Karen Taylor
Ch. Alkarah's The Tempest, CD Karin Wagner
Ch. Valco's Rambler of Caramist, CDX Ruth Armisto
Ch. Windyhills Zydeco, CDX John Long and Karen Rogers
Ch. Herrlichkeit Nicholas V Aljan, CD William Jernigan
Ch. Pashen Bonnie B'Good V Aljan, CD Joseph Hodges and Rose Weistock

Ch. Jadon's Rocky Marciano, CD Janet Ingalls
Newsletter Awards for Category 1-Quarterly Newsletters.
First and Best Newsletter GSDC Western Pennsylvania "Jotter"
Editor: Jack Mild and Nicki Hood.
Second GSDC of Eastern Virginia "Virginian" Editor: Laura Gilbert.
Third GSDC of Oregon "The Oregon Trail" Editor: Ruth Scheubler.
Fourth GSD Training Club of Chicago "Highlights" Editor: Suzanne Erickson.

Newsletter Awards for Category 2-Monthly Newsletters.
First and Runner Up GSDC of Washington State "Northwest Shepherd News" Editor: Syd Mailberg.
Second GSDC of Greater Kansas City "Schafherhunde News" Editor: Patty and Kim Downing.
Third GSDC of Minneapolis and St. Paul "Shep O Gram" Editor: Rose Lutz.
Fourth GSDC of Houston "Shepherd Space News" Editor: Linda Franklin.

Register of Merit Sire and Dam Awards Presentation was made to the Dogs and Bitches featured in the July and August 1999 German Shepherd Dog Review.

Training Achievement Award

#1 Sire is AOE Sel. Ch. Topflight's Laredo v Freeling ROM owner: Mike and Debbie Levin.

#1 Dam is OTCH Lujon's Dulcimer of Ashmead UD owner: Amy Vose.

#1 Sire for cumulative points is Henk von Bushletten owner: Leonie Pulis.

#1 Dam for cumulative points is OTCH Lujon's Dulcimer of Ashmead UD owner: Amy Vose.

World Championship: The GSDCA team placed 10th in a record entry of 134 dogs after four full days of competition at the Trials in Baunatal, Germany in October, 1999. Team members: Linda Holste, John Riboni, Rob Dunn, Jessy Gabriel, Carolyn Dawson, and Inge Goetz-Cordova.

Election Results

President: Ken Downing

Vice-President: Lanalee Jorgensen

Recording Secretary: Ginny Altman

Directors: Tish Walker

Lori Nickeson

Carmen Battaglia

Dorothy Linn

Kenneth Tank

Dania Karloff

Dan Smith

Ted Beckhardt (completing the 1 year term vacated by Ken Downing)

Highlights from the Victory Dinner held on October 23, 1999.

LaMar Kuhns Award was presented to Terry Hower.

Connie Beckhardt Award was presented to Doris Estabrook.

Award of Excellence plaques were awarded to:

AOE GV Ch. Mar Haven's Color Guard, HT, PT Owners: Doris Estabrook and Carolyn Martello

AOE Select Ch. Landaleigh's Quedo Vuelo, CD Owner: Gail Cobleigh

AOE Select Ch. Ken-Delaine's Carousel, PT Owners: Lew and Nicky Bunch

President's Awards were given to: Maryellen Kish for her work as chairperson of the Ad-Hoc Standards Committee, Frank Lopez, for his assistance in resolving legal matters confronting the Club, and Morton Goldfarb for his work with the World Union on behalf of the GSDCA.

Amy Riley was recognized as the Best Junior Handler, winning from the Open Senior Class.

Temperament Test was held on Tuesday, October 19, 35 dogs participated and 80% of the dogs passed.

President, Dan Smith received an award for his years of service to the GSDCA as Club President. The award was presented by incoming President, Ken Downing.

Results of the election of judges for the 2000 National Specialty:

Obedience:

Patricia Scully 729

Patricia Hess 590
Sue McDonald Cox 491
Conformation:
Joseph Bihari 216
Joan Fox 196
Helen Franklin 181

Highlights of the Board Meeting

President, Dan Smith expressed appreciation to the entire board for their work during this past year and congratulated incoming President, Ken Downing. He recognized the members of the Board that would not be returning in January, Danny Dwier, Kathy Casteel, and Helen Miller Fisher and expressed appreciation for their contributions.

German Shepherd Dog 75th Anniversary pins are available for \$25. Contact Eugene Tenges if you are interested in purchasing one.

The closing date for the Futurities has been changed from February 25 to March 8 beginning in 2000.

The Futurity Committee made several recommendations to the Board in July which have a second reading at the Board Meeting in January if they are to be approved.

The committee proposed decreasing the number of regions from nine to six. The committee believed this would provide better entries in each region. The proposed new regions may be seen on the GSDCA web site: www.gsdca.org

Another recommendation of the committee was to bring the reserve winner of each sex in the Futurity and Maturity from each region to the National to compete with the BIM, BIF, BOM, BOF winners.

A third proposal was proposed which was designed to encourage breeders to show additional puppies from their litters. This was a "Futurity Litter of the Year Award" which would be presented at the Victory Dinner. Requirements for this award are: A) litter must consist of at least four live puppies. B) At least three puppies from the litter must be entered in the Futurity. C) The winner will be determined on the point system based on the number of dogs defeated by the litter members, divided by the number of puppies in the litter. Placing will be counted down to six (no plaques to be given for 5 or six) for the purpose of determining the number of dogs defeated.

A fourth recommendation was to offer a Progeny Class at each Futurity. This would be an exhibition class and if it is successful it could develop into a competition class. The requirements would be 1) Entry fee of \$25.00 2) Sire and/or dam may only exhibit in the region in which he/she resides. 3) At least three progeny must be shown. 4) There is no age limit on the progeny. 5) Progeny do not have to be entered in a Futurity show. 6) Rosette to be awarded.

The Public Relations Empowered Action Education Seminar on Tuesday October 19, 1999 had 43 people in attendance.

A Recognition Trophy was approved, will be engraved and sent to the Headquarters of the Vietnam War Dog Handlers Association in California to honor all Combat Dog Handler and Tracker Teams for their outstanding contributions to this country. Watch for an article in one of the Winter issues of the Review.

WUSV - SV Report The World Union Clubs represent 350 thousand German Shepherd Dog Fanciers around the world. A Health Seminar was presented following the World Trials in October. The 100th Anniversary World Sieger Show in August was attended by 50 thousand GSD fanciers. It was a gala affair and there were a number of GSDCA Board Members, our Review Editor, and GSDCA members in attendance.

Budget & Finance Committee Meeting Atlanta, Georgia. January 20 - 21, 2000, preceding the Board meeting.



The January Board

Drawing by
Marcia Hadley

What is a Title Really?

A Title is a tribute to the dog that bears it, a way to honor the dog, an ultimate memorial. It will remain in the record and in the memory for about as long as anything in this world can remain. Few humans will do as well or better in that regard. And though the dog himself doesn't know or care that his achievements have been noted, a Title says many things in the world of humans, where such things count.

A Title says your dog was intelligent, and adaptable, and good-natured. It says your dog loved you enough to do the things that please you, however crazy they may have sometimes seemed. And a Title says that you loved your dog, that you loved to spend time with him because he was a good dog, and that you believed in him enough to give him yet another chance when he failed, and that in the end your faith was justified.

A Title proves that your dog inspired you to have the special relationship enjoyed by so few, that in a world of disposable creatures, this dog with a Title was greatly loved, and loved greatly in return. And when that dear short life is over, the Title remains as a memorial of the finest kind, the best you can give to a deserving friend, volumes of praise in one small set of initials before or after the name.

A Title is nothing less than love and

"Old Dog"

When the old dog had to die after long years full with love, and honor. When the weight of time grew wearying, and he was content to have it finished, I brought my old dog to our friend. Old dog lay soft against me, old eyes already closed, ... waiting.

Our friend's hand was gentle on the weary body, with it's ragged fur, so gentle to find the frail small vein where death could enter. DIFFICULT. Old blood runs sluggish, old veins slackly resisting. So patient, our friend, her knowing hands all I can see through silent tears.

I watch capable strong hands lightly coaxing, and at last a small red flower blooms briefly in the crystal before she eases the plunger in. Old dog only sighs very softly. The weary heart slows, and stops as the joyful spirit leaps free.

We wait a quiet minute, my tears dropping unheeded into the soft fur. Our friend withdraws, her gentle hands leaving old dog's cast off body. My head bowed over the weathered white mask for a moment before I let him lie by himself, and draw the blanket over him.

I wish the old dog had made it easier for her. To bring even a kindly death brings sadness. I wish I could thank her for keeping zest in his years, for making a good end of them, for her capa-

ble hands, for her gentle words, and caring heart.

I took my old dog home, and laid him as if sleeping, wrapped in his worn blanket, and sheltered deep in the warm silent earth.

**In Loving Memory of
Black Oak's Sargent Pepper, T.**

**Animal Rights Alliance Hero Dog
Humane Society of Missouri Hero
Dog**

**German Shepherd Dog Club of
America Hero Dog
1980 - 1993**

**And in Memory of our friend,
Dr. Mary Wernert, DVM
MJ Hadley ~ Black Oaks**



Marcia Hadley's drawing of "Sarge"

ANTIDOTE FOR ANTIFREEZE OR COOLANT POISONING IN DOGS APPROVED

Orphan Medical has announced the availability of Antizol-Vet (fomepizole) for injection; the first antidote for suspected or confirmed ethylene glycol (antifreeze or coolant) poisoning in dogs. It has been approved by the Center for Veterinary Medicine of the Food and Drug Administration.

A surprisingly large number of dogs are poisoned annually by ethylene glycol. Up to an estimated 10,000 dogs are treated for this type of poisoning each year.

Many more dogs are never diagnosed or are brought to the vet too late for treatment to be effective. A very small amount of ethylene glycol is toxic to dogs. If a dog ingests ethylene glycol, it must be brought to the vet immediately. Rapid diagnosis and treatment are crucial to

a successful outcome.

Left untreated, ethylene glycol poisoning has the highest fatality rate of all common poisons among animals.

Orphan's web site ([http://](http://www.orphan.com)

www.orphan.com) lists the following common signs of ethylene glycol poisoning along with other information.

Signs of ethylene glycol poisoning, it is ex-

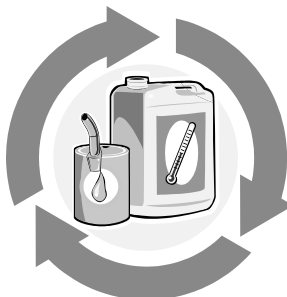


Photo Courtesy of Microsoft Publisher

tremely important for dog owners to be aware of the toxicity of ethylene glycol and to seek medical treatment for their dog immediately upon recognizing the following signs:

1. Drunken state: The dog may appear to be in a stupor. It may stagger, weave, stumble and fall. In addition, the dog may be uncoordinated disoriented and have decreased reflexes.
2. Listlessness: The dog may appear depressed and incoherent.
3. Polyuria: The diuretic effect of the ethylene glycol results in the dog urinating frequently.
4. Polydipsia: The dog will be excessively thirsty.
5. Vomiting: Although it may occur, vomiting is not persistent and may not be witnessed.

If your dog exhibits any of these signs, or if you

Everything You Always Wanted to Know About Showdogs

ANGULATION: Degree to which dog handlers will bend over backwards to impress the judges.

BALANCE: How to arrange the checkbook so your husband won't know how much money you spent on dog shows last month. Usually done in the bathroom with the door locked.

BITCH: A. Name for a lady dog. B. Name often overheard at dog shows, not always to describe a lady dog.

COAT: The hairy covering of a dog that usually falls out about one week before the Specialty show.

DAM: A. A lady dog with children. B. Expression frequently overheard at dog shows as losers leave the ring.

ELBOW: Method of getting to ringside when late.

EXPRESSION: "Sweet" look adopted by dogs while staring ravenously at chunks of liver.

FANCIER: Degree to which some gentlemen handlers dress more than others.

FEATHERING: What winners are accused of doing to judges' nests.

FRONT: Part of the dog often stacked toward the outside of the ring.

HEEL: A. You feel like when your dog beats the one you had just sold to an eager novice. B. Expression often screamed to attract the attention of deaf dogs.

HEIGHT: As in "Maximum Allowed," a measurement which all champions fall under by AT LEAST 1/8 inch.

HOCK: A way of financing your dog shows by the use of jewelry such as wedding rings.

KENNEL: Where you go when the kids fight and your husband yells at you.

LITTER: Trash left all over the building and parking lot after a dog show.

MASK: What to wear when you have to show the pet you sold six months ago.

MUZZLE: What to put on your kids at a dog show to prevent them from calling your competition what they overheard you call him last night.

NOSEPRINTS: Cute marks left all over your French doors.

OUTCROSSING: What your husband tells the minister you are doing out in the kennel with the dog and the bitch.

POINTS: Minute, invisible awards for winning which you cannot convince your spouse are more important than cash prizes.



Drawing by Marcia

*"Whoever said
you can't buy
happiness forgot
about puppies."
- Gene Hill*

**"We all have our preferences, likes and dislikes. We are all different, and that is what sets us apart from the animal kingdom. We are human. Let's act like humans. Let's be tolerant about each other, and show compassion. Let's disagree sometimes-but never get to fanatical about "our" ways, "our" dogs, that we cannot see the truth. Let's respect each other always."
—Erich Renner**

~~~~~ Rainbow Bridge ~~~~~

Just this side of heaven is a place called Rainbow Bridge. When an animal dies that has been especially close to someone here, that pet goes to Rainbow Bridge. There are meadows and hills for all of our special friends so they can run and play together. There is plenty of food, water and sunshine, and our friends are warm and comfortable.

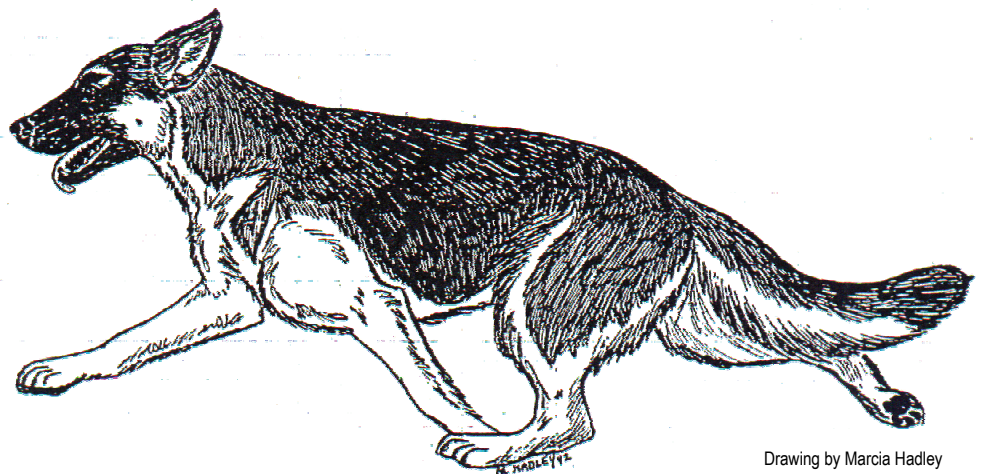
All the animals who had been ill and old are restored to health and vigor; those who were hurt or maimed are made whole and strong again, just as we remember them in our dreams of days and times gone by. The animals are happy and content, except for one small thing - they each miss someone very special to them, someone who had to be left behind.

They all run and play together, but the day comes when one sud-

denly stops and looks into the distance. His bright eyes are intent; his eager body begins to quiver. Suddenly he begins to run from the group, flying over the green grass, his legs carrying him faster and faster.

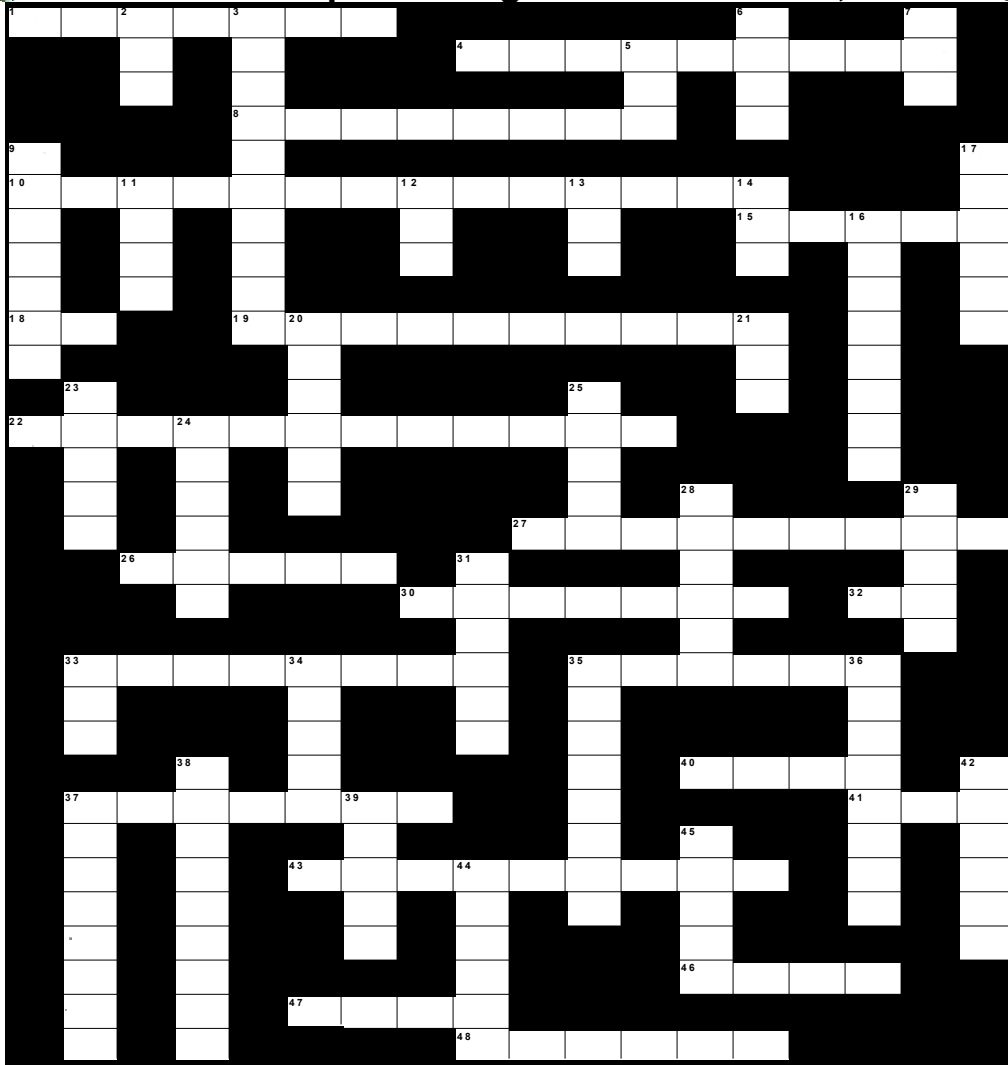
You have been spotted, and when you and your

special friend finally meet, you cling together in joyous reunion, never to be parted again. The happy kisses rain upon your face; your hands again caress the beloved head, and you look once more into the trusting eyes of your pet, so long gone from your life but never



Drawing by Marcia Hadley

German Shepherd Dog Club of St. Louis, Inc.



Drawing by
Marcia Hadley

~Answers to Puzzle will be in next months Wag~

Puzzle by Gail Rutter

ACROSS

1. Country of GSD Origin
4. Basic Training of the Dog
8. Title Achieved By Training
10. Name of Our Club (Abbr)
15. Name of Parent Club (Abbr)
18. Temperament Certified (Abbr)
19. German Training Title
22. Title Earned for Conformation
26. A Variety of Dog Is A ____
27. Instead Of Our December Meeting, Our Club Has A ____ (See 29 Down)
30. Work For Which The GSD Was Bred
32. Herding Tested (Abbr)
33. A Dog's Family Tree
35. National Award Title For a Dog
37. Region Which Our Club Is A Member
40. Father of a Litter
41. Award of Excellence (Abbr)
43. Your Best Friend Is Your ____
46. Command To Not Move

47. Movement In Motion
48. Job A GSD is Trained To Do Ton Find People Who Are Lost or Missing

DOWN

2. Register of Merit (Abbr)
3. Name used for GSDs during WWII
5. Male GSD
6. Command Used To Begin Walking
7. One Pass on a CD Title
9. Training Work Done With Equipment
11. Command to "drop"
12. Orthopedic Foundation of Animals (Abbr)
13. An Obedience Command
14. Canine Good Citizen (Abbr)
16. Police-trained Dogs (2 Wds)
17. Merits of Training or Conformation
20. Species of Animals, Which Are Dogs
21. Mother of a Litter

23. In What You Enter A Dog for Conformation/Obedience Tests
24. In Conformation, Shows with Three to Five Points
25. Female GSD
28. Instead of Our August Meeting, Our Club Has An Annual ____
29. See 27 Across (2 Wds)
31. National Title in Conformation
33. Baby GSD
34. Dog Training For The Blind
35. Class of Mature, Adult GSDs
36. Medical Advancement is Reached Through ____
37. Adulthood
38. What is Needed to Improve the Breed
39. What You Enter To Achieve A Title
42. See 48 Across (2 Wds)
44. What is Earned When You Win At Shows
45. Lower Part of Hind Legs

Well, here goes it. There's a lot of "stuff" in this first edition of the year 2000 Wag'n'Tongue. Most of the content are articles that I've gotten permission to reprint. Marcia Hadley has allowed us to use her beautiful drawings. Tom Langlitz was nice enough to write the article below. I have made requests for certain folks to write articles for publishing in future editions of our Wag as well.

I welcome anyone that would like to submit an article for the Wag. Eventually I'd like to have a column for letter's to the editor. There is a ton of knowledge amongst the membership to share and communicate and this is a great vehicle to do that with. So, get your computer's fired up, your writing utensil sharpened and paper in hand. This is a club newsletter. It is available for all of us to publish interesting articles, brags, litters, stud dogs and your own

space for a breeders listing.

The results that we achieve as a club will be and is dependent on how well we work together as a team. There are several categories that will determine our club's success moving forward.

Focus on new club members. What we say and do creates a club member's perception of what the club is all about. Remember, perception is reality. Your behavior is a reflection of the club.

Believe in your fellow club members. Trust in positive intentions, encourage ideas from everyone and actively mentor a person as an individual. New and tenured club members will be diverse in style and background and accept people for who they are, not what we want them to be. Coach and support as much as possible.

Recognize and find reasons to celebrate the achievements of others while having fun doing it. Be accountable for what we do and say. You represent our breed, club and future. Take pride in the club and have a passion for excellence in everything you say and do.

Represent yourself and the club with positive energy and teamwork. Execute with positive energy and intensity...hate bureaucracy and all that comes with it. Everyone's feedback is important. Practice team together, team apart. Easier said than done? Probably, it will take a concerted effort from each member. Would effort in this area from each of us help? Absolutely!

Just some points to think about. Back to the newsletter, read it, think about it and submit, submit, submit. Feedback is appreciated

Specialty vs. All Breed

What is the difference between a Specialty dog and an All Breed dog? No doubt most of you instantly answered with one word. "ANGULATION!" Most people who have not spent much show time in a specialty ring, sincerely believe that the dogs in that competition must be "extreme." In some cases, they are. However, more extreme angles, when they exist, are only a result of the differences between the two venues.

In order to arrive at a reasonable conclusion as to what are the differences between top winning All Breed dogs and top winning Specialty dogs, we should first ask why differences exist. To find an answer to this, we must examine the obvious. That is, the physical differences between the two shows. Any show is constructed using some basic physical parts. Each show has a show site, a ring, a judge, and dogs. Since the conclusion we are hoping for is about the dogs, we'll look at that last.

Judges: Let's examine the judge first. I chose this one because of the three remaining physical parts of a dog show, the judge has the least impact overall. Okay, most of the Specialty people have just called me all sorts of colorful names. Before you folks write me off as a loon, let me explain.

Many Specialty enthusiasts will point out the differences in judges when arguing for their preferred forum. Of course there is a difference. The greatest majority of All Breed judges have probably never even owned a German Shepherd Dog while nearly every Specialist has spent years with the breed. Because of this, some people believe that the Specialty judge is always a better judge of the German Shepherd Dog. I do have a reply to that reasoning though. Go out and buy several books about art. Now, spend huge amounts of time studying the subject. Go to art shows. Choose a venue... Oil paints?... Watercolors?... sculpting? Dab a brush into some paint and see what great work you can come up with. When you've finished this task, are you a great artist? True artists are born, not made. While you might acquire the ability to paint a picture, a work of art is much more than that. It is the ability to put your soul onto a canvas. Judging dogs is not too different. We've all heard the descriptive phrase, "an eye for a dog." That "eye" is a version of artistic talent. While some judges can learn to paint that picture, others could recognize a true work of art before they ever read a breed standard. They can see quality in any venue... That talent is not breed specific. For this reason, the judge becomes a minor part of the differences we see in

dogs. There are bad judges in both rings but more importantly, there are good judges in both rings also. Unfortunately, even the best All Breed judge is often put at a disadvantage. We'll get to that later in this article, since it is a direct result of two remaining physical factors.

The Show Site: Anyone can see the obvious differences between the All Breed show site and the Specialty show site. An All Breed site is set up to judge every AKC recognized breed. The necessities of the show are usually compacted in order to make use of every available inch of space. While there are a few large outdoor All Breed shows, even there the rings and tents are often compacted into a small area for judging. It is a matter of available space and convenience for the judges, show workers, and show superintendent. A specialty show, as most of you know, is usually a matter of setting up one or two rings, most often at a spacious park or hotel courtyard. The restrictions of the All Breed site, and the usual wide open spaces of the Specialty site, always decide ring size. This conveniently leads us to what I believe is the single most influential difference between the All Breed show and the Specialty show.

The Ring: Generally, All Breed rings are small and Specialty rings are large. This is understandable given the limitations of the show sites as they compare to the number of dogs exhibited. Nevertheless, there is no other physical property within a dog show which has more effect on the dogs exhibited. The difference in ring size has caused the differences in the dogs exhibited in each show system. When you read the standard for the German Shepherd Dog, you cannot ignore the importance assigned to motion. Motion is the result of structure. Although structure can be judged while a dog is standing, it should be judged while the dog is in motion. No amount of gazing at a standing animal, or attempting to feel through careful grooming can replace watching the result of that dog's structure. Ring size has created the reason for asking the question which leads this article. What is the difference between a Specialty dog and an All Breed dog?

The dog: I'm sorry to tell you this, but you're original answer was incorrect. Extreme angles and moderate angles are nothing more than side effects to the conditions we exhibit our dogs in. The difference between a Specialty dog and an "All Breed dog" is always motion, more directly... side gait. In some cases, more angle leads to more ground coverage. Notice I used the phrase "in some cases." More angle is only a benefit when it is useful angle. That is directly affected by strength of ligament, and overall power. In other words, sometimes more angle is a bad thing, even in a specialty setting. Once again, motion is most important there, and the large ring

will tell all. If you have a great moving dog and you have shown it only in the All Breed system while believing that the dog is not "extreme" enough for a Specialty show, then you have made a serious error in judgment. I can only wonder how many potential Select dogs have never had the opportunity to exhibit what they have, because they have always been confined to a small ring.

As I stated earlier, the All Breed judge is usually at a disadvantage. Often, people will send photographs of their dogs to me, asking for my opinion. While I might comment on some of the parts of the dog which are viewable in that photo, I always cap my comments by stating that "I'd have to see the dog move." In effect, when a judge is restricted to seeing a dog take three steps then turn, he or she is not seeing one of the most telling parts of the dog. That judge is basically confined to judging the dog's picture. For this reason, some parts of the dog become more important than others.

Stop for a moment to think about which things are most important in an All Breed show. Heads come to mind instantly. Clean coming and going are a major factor. Animation, or a showy attitude is right up there with these traits. Feet? Coat? Overall type? All of these things are easy to see in a small ring. I've heard it said that these traits are not important to a Specialty judge. Once again, the restrictions of a small ring come into play. ... When watching a specialty, keep in mind the importance which gait is assigned by our standard. Be honest in evaluating the side motion of the dogs in that large ring. The winners are usually picked from the ones which cover the most ground with the fewest steps. The factors which are most prominent in an all breed ring are not ignored in a specialty ring. In fact, the dogs which cover the most ground and exhibit the traits most desired in the all breed ring, often become our top Select dogs.

I take a special interest in the "Specialty Vs All Breed" question. My wife and I have been involved with the breed for over twenty-two years now. Seventeen of those years were primarily spent in the All Breed ring while my wife was still handling. In the time since then, I have almost exclusively shown in specialties. My "Specialty winner?"... Well, he is also an All Breed Group winner. Time and time again, top specialty dogs have gone into All Breed competition and were successful. I "know" that the opposite can be true. There is only one breed of German Shepherd Dog, and the good ones are the good ones no matter where they are shown.

Written by: Tom Langlitz

LIVING LOVE-Written by Martin Scot Kosins, Author of "Maya's First Rose"

If you ever love an animal, there are three days in your life you will always remember...

The first is a day, blessed with happiness, when you bring home your young new friend. You may have spent weeks deciding on a breed. You may have asked numerous opinions of many vets, or done long research in finding a breeder. Or, perhaps in a fleeting moment, you may have just chosen that silly looking mutt in a shelter--simple because something in its eyes reached your heart. But when you bring that chosen pet home, and watch it explore, and claim its special place in your hall or front room--and when you feel it brush against you for the first time--it instills a feeling of pure love you will carry with you through the many years to come.

The second day will occur eight or nine or ten years later. It will be a day like any other. Routine and unexceptional. But, for a surprising instant, you will look at your longtime friend and see age where you once saw youth. You will see slow deliberate steps where you once saw energy. And you will see sleep where you once saw activity. So you will begin to adjust your friend's diet--and you may add a pill or two to her food. And you may feel a growing fear deep within yourself, which bodes of a coming emptiness. And you

will feel this uneasy feeling, on and off, until the third day finally arrives.

And on this day--if your friend and God have not decided for you, then you will be faced with making a decision of your own--on behalf of your lifelong friend, and with the guidance of your own deepest Spirit. But whichever way your friend eventually leaves you--you will feel as alone as a single star in the dark night.

If you are wise, you will let the tears flow as freely and as often as they must. And if you are typical, you will find that not many in your circle of family or friends will be able to understand your grief, or comfort you.

But if you are true to the love of the pet you

cherished through the many joy-filled years, you may find that a soul--a bit smaller in size than your own--seems to walk with you, at times, during the lonely days to come.

And at moments when you least expect anything out of the ordinary to happen, you may feel something brush against your leg--very very lightly.

And looking down at the place where your dear, perhaps dearest, friend used to lay--you will remember those three significant days. The memory will most likely be painful, and leave an ache in your heart--As time passes the ache will come and go as it has a life of its own. You will both reject it and embrace it, and it may confuse you. If you reject it, it will depress you. If you embrace it, it will deepen you. Either way, it will still be an ache.

But there will be, I assure you, a fourth day when--along with the memory of your pet--and piercing through the heaviness in your heart--there will come a realization that belongs only to you. It will be as unique and strong as our relationship with each animal we have loved, and lost. This realization takes the form of a Living Love--like the heavenly scent of a rose that remains after the petals have wilted, this Love will remain and grow--and be there for us to remember. It is a



AKC Schedule Of Points Effective 5/10/99

	1 POINT		2 POINTS		3 POINTS		4 POINTS		5 POINTS	
	Dogs	Bitches	Dogs	Bitches	Dogs	Bitches	Dogs	Bitches	Dogs	Bitches
Division 1	3	3	11	11	19	20	22	23	28	29
Division 2	2	3	9	12	16	21	21	26	29	35
Division 3	2	2	9	11	16	19	22	24	32	34
Division 4	3	4	10	13	17	23	21	28	28	36
Division 5	2	3	10	12	17	21	24	28	37	42
Division 6	2	3	10	10	17	18	21	23	27	31
Division 7	3	3	10	13	18	22	22	25	28	30
Division 8	2	3	10	13	17	22	22	27	31	37
Division 9	2	3	10	11	16	20	24	27	40	40
Division 10	5	6	10	11	17	20	19	21	22	23
Division 11	2	2	4	4	5	6	6	7	8	9
Division 12	2	2	6	6	10	10	12	11	14	12

Division 1: Connecticut, Maine, Massachusetts, New Hampshire, New York, Rhode Island, Vermont

Division 2: Delaware, New Jersey, Ohio, Pennsylvania

Division 3: District of Columbia, Kentucky, Maryland, North Carolina, Tennessee, Virginia, West Virginia,

Division 4: Alabama, Arkansas, Florida, Georgia, Louisiana, Mississippi, South Carolina

Division 5: Michigan, Illinois, Indiana

Division 6: Iowa, Kansas, Minnesota, Missouri, Nebraska, Wisconsin

Division 7: Arizona, New Mexico, Oklahoma, Texas

Division 8: Colorado, Idaho, Montana, Nevada, North Dakota, Oregon, South Dakota, Utah, Washington, Wyoming

Division 9: California

Division 10: Alaska

Division 11: Hawaii

Division 12: Puerto Rico

Join the GSDC of America

German Shepherd Dog Club of America, Inc Application for Membership

Requirements: Minimum age of 18 years. Must be in good standing with AKC. Membership includes subscription to *The German Shepherd Dog Review*.

Membership Type: (check one)

Single \$66.00 Family* \$100.00

Dues are not tax deductible.

*Family is defined as same household or significant other.

*Make checks payable to GSDCA.

NAME(S) _____

ADDRESS _____

CITY _____ STATE _____ ZIP _____

PHONE(S) _____

FAX _____

EMAIL _____

I (We) hereby make application to the above club and agree, if accepted for membership, to abide by its Bylaws and the Bylaws of the American Kennel Club. Upon application I will be eligible for all privileges except the right to vote. Thirty days after my name has been published in the *Review*, provided no objections have been filed, I will be granted the right to vote.

SIGNED _____

ENDORSED BY _____

SIGNED _____

ENDORSED BY _____

Mail to: Gail Hardcastle
6245 Carolinda Drive
Granite Bay, CA 95746
Telephone 916-791-5642
Message/Fax 916-791-0530
Email hardcg@aol.com



Drawing by Marcia Hadley

*"A dog may be the only opportunity
a human has to choose a relative."
-- Mordecai Siegal*

New Breeds of Dogs

Collie + Lhasa Apso =
Collapso, a dog that folds up for easy transport

Spitz + Chow Chow =
Spitz-Chow, a dog that throws up a lot

Bloodhound + Borzoi =
Bloody Bore, a dog that's not much fun

Pointer + Setter =
Poinsetter, a traditional Christmas pet

Kerry Blue Terrier + Skye Terrier =
Blue Skye, a dog for visionaries

Great Pyrenees + Dachshund =
Pyradachs, a puzzling breed

Pekingnese + Lhasa Apso =
Peekasso, an abstract dog

Irish Water Spaniel + English Springer Spaniel =
Irish Springer, a dog fresh and clean as a whistle

Labrador Retriever + Curly Coated Retriever =
Lab Coat Retriever, the choice of research scientists

Newfoundland + Basset Hound =
Newfound Asset Hound, a dog for financial advisors

Terrier + Bulldog =
Terribull, a dog that makes awful mistakes

Bloodhound + Labrador =
Blabador, a dog that barks incessantly

Malamute + Pointer =
Moot Point, owned by....oh, well, it doesn't matter anyway

Collie + Malamute =
Commute, a dog that travels to work

Deerhound + Terrier =
Derriere, a dog that's true to the end

2000 Canadian National Specialty Show/Obedience Trials

September 14th to 16th
Kitchener Memorial Auditorium -
Kitchener, Ontario
Judges: Breed - Robert Eaton
Males - Maryellen Kish
Females - Leon Breault
Show Secretary: Joanne Randall
RR # 3, Fergus, Ontario N1M 2W4
Phone 519-843-2515
Fax 519-843-1506



Drawing by
Marcia Hadley

*I loathe people who keep
dogs. They are cowards
who haven't got the guts
to bite people
themselves."
-- August Strindberg*

'A Good Dog Is Just That...A Good Dog

I thank God daily for letting me live my life with my dogs. Dogs give unconditional love, unconditionally! That's always been a favorite saying of mine and the best part about it is that it's true. 'Mans Best Friend' is also another true statement about dogs. There's always a kiss waiting for me, a gentle nudge for more attention, and the knowledge that life with my dogs is a 'good life'.

So where does the controversy come from that this dog is better than that one? Who stokes the fires of doom that says the German lines of the German Shepherd dog are better than the American bred dogs? I could name names here, but that wouldn't serve anyone well or get to the real meaning of this discussion. You see...I believe a 'good dog is a good dog' no matter where it's from. I also believe that form should follow function and if the dog functions well, its form is good. I don't have to see a dogs Passport or birth certificate to determine if that function is correct. The two go hand in hand and are evident in a good dog.

There are 'bad' American, German, Lithuanian, and Australian German Shepherd dogs. There are also 'good' American, German, Lithuanian, and Australian German Shepherd dogs. Once again I allude to function...that is the keyword. 'Ole Capn Max' might well look at today's version of any GSD and roll over in his grave. They hardly resemble the 1900's version he created to herd sheep. That said, could they still herd sheep? They can and do. Some do it more easily than others and that's because they are structurally capable of herding sheep in an efficient manner. In the American GSD Standard...there is a wonderful passage that refers to the dogs gait...**"The gait is outreaching, elastic, seemingly without effort, smooth and rhythmic, covering the most amount of ground with the minimum amount of steps."** I fail to see where that description alludes to any particular ethnicity nor should it! Remember...a good dog is a good dog!

There is a movie of the above description; I

have hidden in my mind. It plays every time I find myself in the center of the ring judging these wonderful dogs. The dog that approximates that description the closest will most always get my nod. This breed was created to herd sheep. In order perform that function, the form must be correct. The dog must be balanced front and rear. Too much of anything will prevent correct function...rear, wither, bad topline, carped backs, it makes no difference. The Germans have a wonderful word for balance 'Gestalt'. A dog that is balanced will be able to herd sheep all day. A dog that is 'Gestalt Challenged'...will take more steps to accomplish the same task. It's 'Movement 101'...folks! There are American, German, Lithuanian, and Australian GSD's that are 'GC'...and there are dogs in the same countries that are not 'GC'. They can and do, do the work.

Of course there are other factors that constitute a quality GSD...temperament, type, and courage...but to name a few. However, a typey, courageous, sound in mind dog that is not 'Gestalt' in form will not perform Capn' Max's intended function for this dog. The key is for everyone in every country to breed for that total dog. I do not believe that anyone in any country has an exclusive on that intent.

This is not a debate on ethnicity...rather a debate on style. I think it should be a debate on form and function. We can all agree to disagree on style...but the effects of function and form are constant...no matter where your dog is from!

A 'good dog is a good dog'...period!

Paul Root
Rivendell German Shepherds

*"If the pillars of the breed show dogs that don't conform to the standard, they can expect less knowledgeable new comers to follow suit. The solution is to breed to fit the standard, not change the standard to fit what you breed." —Michele Billings
Founder GSDC of Atlanta*



Drawing by Marcia Hadley

A G R E T R I E V E B C W T R A I N I N G D E F G C T
 Q P E L B O W S H A M P O O J O J S N M L K J I A H E
 R S I R E S T Y P A R E H T U U U H H C T A M N U F A
 F E C A M D C B A Z Y X S G N I M O O R G A I T W V M
 G K N L W A G N T O N G U E I H P U I J K N L M N O W
 K C A L B B N A Z S Y X T W O V S L U T E S R E Q P O
 I A F O D U T S C R D I E F R G H D I J K D L C M N R
 B T V C U T S R H A B A L L K Q E E H C A E R I P O K
 B S W X T N I R P E S O N C Y N Z R A E M V B V C O D
 L O G D N C L U B M P L O K O J I H H T A E G O W F E
 E P N E Q R K S S P I H R B L A C K A N D T A N T U D
 H G I R F E S D C B A L E A S H Z Y N O X E E E W V N
 I J H B A L A N C E B K A R F L M N D R K R O D G P E
 N W T N L V M U T S A D R K D F R Q L F E A P I N D P
 O G A A N G U L A T I O N X Y Z E A E B N N O R I A S
 I N B C L K J L I A T U I H G F E C R D N C I T S E U
 S I M I E C N E I D E B O P E N R N T O E P N S S L S
 S W B R E E D E R R Q L E L B A S A G I L I T Y O E I
 E E S E T U V R E T T I L W T X Y P S Z O A S B R S U
 R H A M E E T I N G R N Z E H G U L F E D N T C C O O
 P C O A T I J K L M I G Z N O P I G M E N T E P T O L
 X U E D U C A T I O N T U S P A S T E R N R E Q U L T
 E G D U J V W X Y Z G A M Y N O I T A M R O F N O C S

AFFECTION
 AGILITY
 AMERICAN BRED
 ANGULATION
 BAIT
 BALANCE
 BALL
 BARK
 BATHING
 BITE
 BLACK
 BLACK AND TAN
 BONE
 BREEDER
 CANINE
 CHEWING
 CLUB
 COAT
 COLLAR
 CONFORMATION
 CRATE
 DAM
 DOUBLING
 EARS
 EDUCATION
 ELBOWS

EXPRESSION
 FANCIER
 FEET
 FRONT
 FUN MATCH
 GAIT
 GERMAN SHEPHERD
 GROOMING
 HANDLER
 HEAD
 HIPS
 HOCK
 JUDGE
 JUMPS
 JUNIOR
 KENNEL
 KIBBLE
 LEASH
 LITTER
 LOOSE LEAD
 MASK
 MEETING
 MUZZLE
 NAILS
 NOSEPRINT
 NOVICE

OBEDIENCE
 OPEN
 OUTCROSSING
 OWNER
 PASTER
 PIGMENT
 POINTS
 PUPPY
 REACH
 REAR
 RETRIEVE
 RING
 SABLE
 SHAMPOO
 SHOULDER
 SHOW
 SIRE
 ST LOUIS
 STACK
 STRIDE
 STUD
 SUSPEND
 TAIL
 TEAMWORK
 THERAPY
 TRAINING

VETERAN
 WAGN TONGUE



Drawing by Marcia Hadley

GERMAN SHEPHERD DOG CLUB OF ST. LOUIS, INC.

Wag'n Tongue

Liana New
 707 Cheshire Road
 Troy, IL 62294
 (618) 667-7145 Home
 (618) 667-8166 Fax
 Email-Liana@prodigy.net

Our Club is on the Web!!
<http://members.aol.com/gsdcs/>
 Thank you Bill Harper

*"I wonder if other dogs think
 poodles are members of a weird
 religious cult."
 -- Rita Rudner*

~Wag'N Tongue Information~

As the official publication of the GSDC of St. Louis, Inc., the Wag is sent to each member or family in good standing, to each regional club with whom we exchange newsletters, subscribers, advertisers and the Recording Secretary of the GSDC of America, Inc. Any other obligations which the Parent Club may require shall be met.

Any claims or statements of the writers or advertisers in this publication represent their own opinions and are not necessarily the opinion of the Editors nor of the Officers and Directors of the GSDC of St. Louis, Inc.

Articles appearing in this newsletter may be reprinted if credit is given to the author and the Wag'N Tongue unless otherwise noted.

**Cool Web Sites**

American Kennel Club
<http://www.akc.org/>

German Shepherd Dog Club of America
<http://www.gsdca.org/>

German Shepherd Dog Club of St. Louis
<http://members.aol.com/gsdcs/>

The Westminster Kennel Club
<http://www.westminsterkennelclub.org/>

Dog Fancy Magazine
<http://www.dogfancy.com/>

Dog World Magazine
<http://www.dogworldmag.com/>

Monks of New Skete
<http://www.dogsbestfriend.com/>

Jack Onofrio
<http://www.onofrio.com/>

2,000 Dog Names

<http://www.petrix.com/dognames/>
Orthopedic Foundation for Animals
<http://www.ofa.org/>

The American Veterinary Medical Association
<http://www.avma.org/>

Dog Drug Index
<http://www.vetinfo.com/dogindex.html>

Rimadyl Package Insert

<http://www.pfizer.com/ah/rimadyl/ripkgin.html>
Foster and Smith
<http://www.drsofostersmith.com/>

J-B Wholesale, Inc
<http://www.jbpet.com/>

Petopia
[Http://www.petopia.com](http://www.petopia.com)

Ralston Purina
[Http://www.purina.com](http://www.purina.com)

Show GSD List
<http://www.userhome.com/showgsd/>
 Subscr~1.htm

Pet Insurance
http://www.veterinarypetinsurance.com/vpi_user/

Pets Welcome
<http://www.petswelcome.com/>

American Temperament Test Society, Inc.
<http://www.atts.org/index.html>

Dog News
<http://www.dognews.com/>

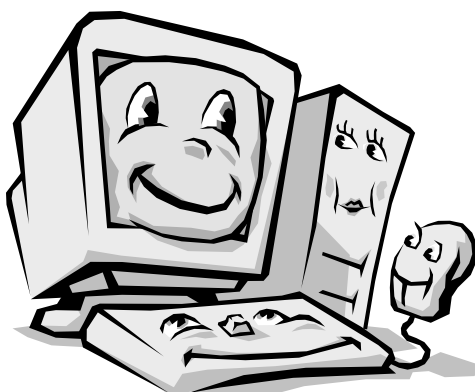


Photo Courtesy of Microsoft Publisher

Whelping Box

JANUARY / FEBRUARY 2000

PAGE 15

This Space For Puppies

This Space For Puppies

This Space For Puppies

This Space For Puppies

This Space For Puppies

This Space For Puppies

This Space For Puppies



Drawing by
Marcia Hadley

Free listing for club members

Win*Place*Show

JANUARY/FEBRUARY 2000

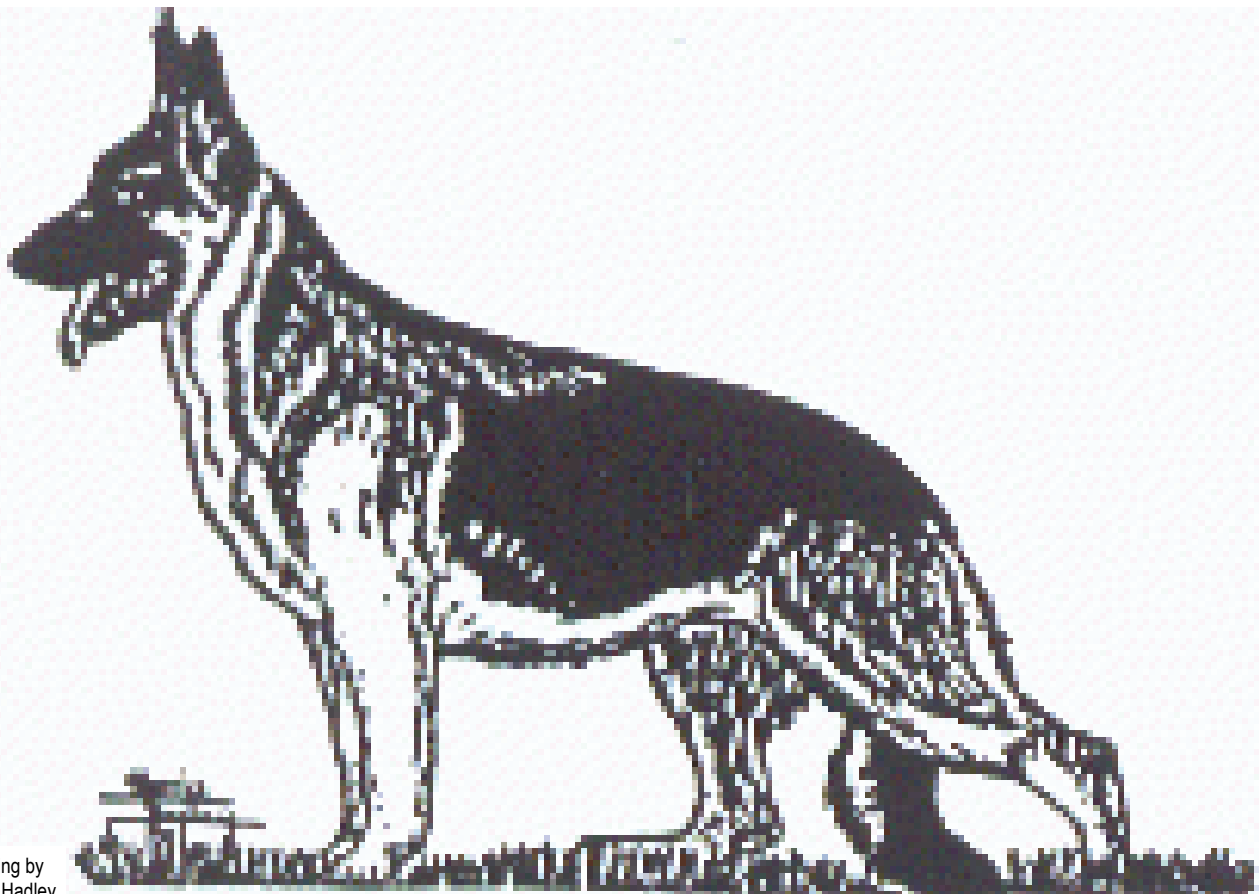
PAGE 16

This Space For Member Brags

This Space For Member Brags

This Space For Member Brags

This Space For Member Brags



Drawing by
Marcia Hadley

Free listing for club members

Stud Dog Listing

JANUARY / FEBRUARY 2000

PAGE 17

Black Oak's Wiseguy v. Hadori

OFA HIPS GS57521G29M-T, ELBOWS GSEL10625-T

Sire: Black Oak's De'Niro of Judeen OFA

Dam: Hadori's Chattahoochee, Prelims Normal

Joey is a correct to the standard, masculine young dog (25 1/2" and 85 Pounds) Joey has alot to offer including a bold fearless temperament, iron back, beautiful black and red plush coat, and correctly angled shoulder. (Seldom seen today). A two year old with valuable old blood lines. Including Select Champion Lothario Heinerburg, CD ROM AOE, Select Champion Belle Vista's Joey Baby ROM, and is heavily line bred on Champion Kubistaum's Kane ROM. Who's phenotype he reflects. Available to approved bitches. Must provide negative brucellosis and vaginal culture-NO EXCEPTIONS. Photo/Pedigree and Terms by request.

Black Oak Shepherds
Marcia Hadley and Gina Mills
11753 Castle Ranch Road
DeSoto, MO 63020

Ch Major's Max of JenBeau

OFA HIPS and OFA ELBOWS

Sire: Champion Caralon's Beau of Judeen ROM

Dam: Caralon's Jennabrix DeRousse C. D.

Max is a big boned, low stationed black and tan with a large masculine head. He carries the black recessive and has a good shoulder.

DeRousse Shepherds
Judy DeRousse
817 Kleekamp Lane
Washington, MO 63090
636-390-2177

Hadori's Stone Cold

PRELIMINARY HIP AND ELBOW XRAYs GOOD

Sire: Sel Can/Am Ch Langlitz's Rapid Fire

Dam: Hadori's Kelsey

Hadori German Shepherds
Ricky and Greg Harrison
11 Donald Drive
St. Charles, MO 63304
636-441-4559
Email: Hadori@webtv.net

Am/Can Ch Mari-Fiori's Bold Ruler Judeen

OFA HIPS GS50384G25M-T MC, ELBOWS SGEL7590-T

Sire: Sel Am/Sel Can Ch Winning Way's Chimo OFA, H/E/T/Cx

Dam: Can Sel/Am Ch Mari-Fiori's Ruffian of Judeen, OFA, H/E/T/C HIC

Medium sized, extremely masculine bi-color, with noble head/expression. Carries (and produces) plush coat, high wither attached to a strong back and long saber tail. He produces his clean correct movement, nicely curved stifles and good forehands. Carries recessive for solid blacks. A young Champion, his pups are awesome!!

Mari-Fiori Shepherds
Marilee Wilkinson
6647 Haven Hill
Barnhart, MO 63012
636-464-8494

Mari-Fiori's Cigar

OFA HIPS GS54734G24M-T, ELBOWS GSEL9414-T

Sire: Sel Am/Sel Can Ch Winning Way's Chimo OFA, H/E/T/Cx

Dam: Can Sel/Am Ch Mari-Fiori's Ruffian of Judeen, OFA, H/E/T/C HIC

Large, balanced young dog with deep, rich pigment a sweet temperament and a great sense of humor. Cigar has a beautiful forehand and a powerful elastic side gait, a nice dark eye and full and correct dentition. He should provide improvement in size and masculinity, proper angle, lay back of shoulder and of course movement and temperament.

Dan and Liana New and Marilee Wilkinson
707 Cheshire Road
Troy, IL 62294
618-667-7145 or 636-464-8494
Email: Liana@prodigy.net

Lytbar's Akecheta

OFA HIPS and OFA ELBOWS

Sire: Ch Jodon's Viper V Hopson OFA

Dam: Ch Tartan's Rochill Georgie OFA

Lytbar's Akecheta (Warrior) is a Lithorio and Zorba grandson, a black and red dog. He is OFA Good hips and elbows. He will be three years old on March 22nd and he has three points towards his championship. Warrior was proven on 10-31-99 when Ch Don Chris's TNT whelped 7 puppies, 4 males and 3 females.

Ken Hummel
3666 Highway 30
Lonedell, MO 63060
636-629-2049
Email: lytlbar@usmo.com



Drawing by
Marcia Hadley

Breeder's Directory

JANUARY / FEBRUARY 2000

PAGE 18

Anndee Shepherds

Ann Douglas
2801 Black Hills Court
Imperial, MO 63052
314-282-1070
Email: ANNDEEKAY@aol.com
Puppies, Conformation Training (Junior in training)

Black Oak Shepherds

Marcia Hadley and Gina Mills
11753 Castle Ranch Road
DeSoto, MO 63020
636-337-6001
Puppies, Stud Services, Professional

Caralon/QED

Helen "Scootie" Sherlock, Larry Durbeck
451 C.T. Farm Road
Labadie, MO 63055
314-451-5432
Puppies, Adults, Stud Services

Chlomaxsi

John and Nancy LaFata
2254 Branch Road
Fenton, MO 63026
314-225-7283
Puppies, Adults, Stud Services

DeRousse Shepherds

Judy DeRousse
817 Kleekamp Lane
Washington, MO 63090
636-390-2177
Puppies, Adults, Stud Services

DnL

Lois O'Connor
412 Kinswood Lane
St. Louis, MO 63129
314-894-2955
Puppies, Adults, Stud Services, Obedience Instructor

Edgewood Kennels

Ron and Gail Rutter
20983 Pike 307
Bowling Green, MO 63334
573-324-2240
Email: RUTTER@clopton.k12.mo.us

Forest Knoll Shepherds

Herman "Butch" and Gail Stiefferman
9500 Rainbow Acres
Dittmer, MO 63023
314-274-3292
Email: GStiefferm@aol.com
Puppies, Adults, Stud Services

Hadori German Shepherds

Ricky and Greg Harrison
11 Donald Drive
St. Charles, MO 63304
636-441-4559
Email: Hadori@webtv.net

LeBarland Shepherds

The Trapp Family
51 Wildlife Lane
Defiance, MO 63341
314-398-5503
Email: Leetrapp@aol.com
Puppies, Adults, Stud Services, Boarding and
Conformation Training (Junior)

Lytibar Kennel

Ken Hummel
3666 Highway 30
Lonedell, MO 63060
636-629-2049
Email: lytibar@usmo.com
Puppies, Adults, Stud Services

Mari-Fiori Shepherds

Marilee Wilkinson
6647 Haven Hill
Barnhart, MO 63012
636-464-8494
Puppies, Stud Services

IN THE WHELPING BOX				Kennel Name	
Dam				Sire	
Date Whelped	Males	Females	Colors		
Name				Phone	
Address				Fax	
City	State	Zip Code	Email Address		

Free one time listing for Members only.

WIN*PLACE*SHOW				Kennel Name	
Dog's Name				Owner's Name	
Sire				Dam	
Show	Date	Judge			
Class Entered				Placement	
Obedience Scores				Title Completed	

Free to Members, for GSD's only.

STUD DOG LISTING				Kennel Name	
Dog's Name				Owner's Name	
Sire				Address	
Dam				City	State
Email Address	Phone	Fax	Zip Code		
OFA Number Hips				OFA Number Elbows	

Please attach a description of your stud dog and keep it at 100 words or less.

				Send Information and Payment to: Liana New 707 Cheshire Road Troy, IL 62294 (618) 667-7145 Home (618) 667-8166 Fax Email: Liana@prodigy.net	

BREEDERS DIRECTORY				Kennel Name	
Name		Address		City	
Please circle all that apply:				State	Zip Code
P=Puppies	S=Stud Services	H=Handler	Phone		
OB=Obedience	B=Boarding		Fax		
A=Adults	G=Grooming		Email Address		

NON MEMBER SUBSCRIPTION				Kennel Name	
Name				Phone	
Address				Fax	
City	State	Zip Code	Email Address		

*Mail Check or Money Order payable to the GSDC of St. Louis, Inc. \$12.00 a year.

Wag'n'Tongue Ad Rates and other information

MEMBERS	Bi-Monthly	Annual	NON MEMBERS	Bi-Monthly	Annual
Full Page	\$8.00	\$42.00	Full Page	\$16.00	\$84.00
Half Page	\$6.00	\$30.00	Half Page	\$12.00	\$60.00
Stud Dog	\$4.00	\$18.00	Stud Dog	\$8.00	\$36.00
Breeders Listing	\$2.00	\$6.00	Breeders Listing	\$4.00	\$12.00

Deadline for all ads and articles is the first of the month. Ads must be copy ready and paid in full upon submission to the .
 Send this form with complete information and Check or Money Order payable to the GSDC of St. Louis, Inc.

BOARD MEETING MINUTES**November 11, 1999**

President Bud Leistner called the monthly board meeting of the G.S.D.C. of St. Louis, to order at 8:15 P.M., at Uncle Bill's restaurant on Lindbergh and Lemay Ferry.

The roll was called. Jo Ann Leistner was a visitor to the meeting.

The minutes of the October 7, 1999 Board meeting were approved as read.

The minutes of the October 15, 1999 Regular meeting were read.

The Treasurer's Report was read. Ricky Harrison asked about potential tax liabilities and donations.

Alice Becker, Corresponding Secretary said that the Fall Show application is ready to go. Animal Planet TV called Alice regarding our canine awards. Alice has tried to return the calls several times.

COMMITTEE REPORTS

Nominating Committee: Lois said that Rosalind North will not be available for the board. Laura Lassater suggested a small quip regarding officers. This would be helpful for people that don't know the people running for offices.

Training: Lois said the week of Thanksgiving will be graduation for obedience classes. January 12, 2000 will begin a new session of obedience classes.

Conformation Class: Ricky Harrison said that \$688.00 was made this summer from conformation classes. A discussion was held regarding winter classes.

2000 Futurity: Gail Stiefferman went to look at the hotel near Purina. Gail said they're okay. A discussion about hospitality took place. Ricky Harrison suggested a nice hospitality be held on Friday and Saturday evening. Ricky wanted input from the board. A discussion was held about getting enough volunteers to actually help with the hospitality.

Ricky said the sweatshirts are being handled. The new image is being custom designed by her person.

Royal Hecht Awards: Marcia Hadley said there was an issue of how to get the entries out. The mailing list will be created based off of eligible attendance and hours worked.

Wag'N Tongue: Gail Stiefferman brought up the status of the Wag'N Tongue. Bud Leistner nominated Liana New to do the Wag'n Tongue. Marilee Wilkinson made a motion that Liana does the Wag and the motion was seconded by Ann Douglas and passed.

Special Edition Wag'N Tongue: Marcia Hadley said that the Special Issue for our 50th anniversary this fall needs memorabilia on our club for research. Articles and quips would be greatly appreciated for this Special Edition. Marcia also said that the printing would be free if we allow Office Depot to put a small logo of theirs on our Special Edition Wag'N Tongue.

1999 Christmas Party: Ann Douglas said that this years Christmas party will be at Hessler's Pub on December 19, 1999 at 6:00 p.m. The price will be \$14.00 per person. She requested a gift exchange and to mark the gift guy or girl. Door prizes are needed. Ann Douglas and Elaine Bisbaine need all reservations by December 6, 1999.

2000 Spring Specialty: Gail Stiefferman discussed the Spring Specialty and dual entries with the Southern Illinois German Shepherd Dog Club. Questions regarding how catalog sales etc. would be handled. Gail is working to get committees together for the Spring Specialty. Mary Tisius will be

the show Secretary for both shows.

Education: Lee Trapp talked about the upcoming educational programs at the regular meeting.

January	Emergency Vet Clinics
February	Royal Hecht Awards
March	Breed Standard
April	Obedience Training

Ilona Horn acquired over 100 books from pedigree. The club will be able to decide on how the books will be utilized. Marcia Hadley suggested that we do the breed standard in March and Lois O'Conner agreed to do the Obedience Training presentation in April.

OLD BUSINESS

Alice Becker stated that our club missed the boat by not having a banner in this years parade at the National. Bud Leistner took accountability for not having a banner. Bud will contact the person doing our decals to see if he can also do our banner.

Bud Leistner said that Nancy Kearney has ordered the German shepherd pins for the club. Also he said that Daphne Szucka's therapy dog will air on Saturday at 6:00 p.m. on channel 4. Bud also said that Jim McFarland has two 10 x 10 tents that were hardly ever used that were purchased for the club for \$150.00.

Gail Stiefferman will handle and organize a silent auction for Loren LaFata at the Spring Specialty shows.

Ricky Harrison asked about a committee for judges when doing shows with the Southern Illinois German Shepherd Dog Club. Ricky also discussed regarding judges and the closeness of Kansas City with St. Louis. Jerry Graham is judging both. Ricky suggested that the club send a gracious letter to Jerry Graham asking him to reconsider judging both Kansas City and St. Louis. Also we could ask him if he would consider doing one show and not both. Ricky made a motion that a letter be sent to the judge, Jerry Graham. The motion was seconded by Marilee Wilkinson. Motion was voted on, two opposed, two abstained and the motion passed that the letter would be sent to Jerry Graham. Gail Stiefferman was to send the letter. A huge discussion took place regarding who would send the letter to Jerry Graham. Alice Becker declined to send the letter and Gail Stiefferman volunteered to send the letter with Ricky Harrison's help. Bud Leistner agreed.

NEW BUSINESS

The next board meeting on December 9, 1999 will be held at Uncle Bill's restaurant on Lindbergh and Lemay Ferry Road at 7:00 p.m.

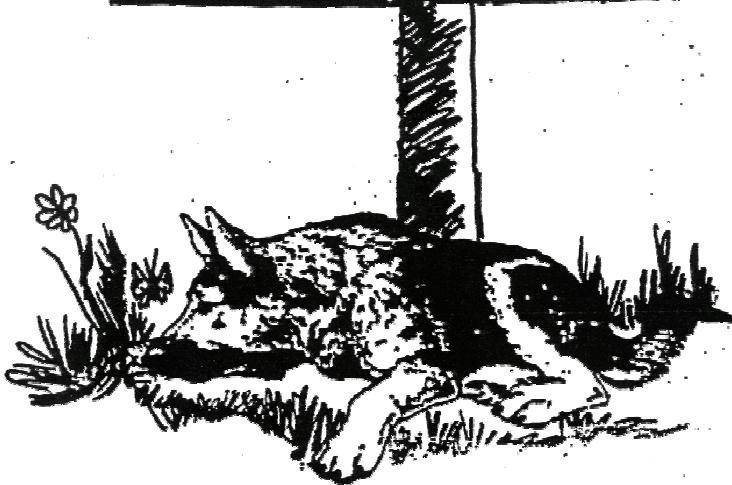
No further new business.

Kathy Redford made a motion that the meeting be adjourned. The motion was seconded by Ann Douglas and passed. The meeting was adjourned at 10:15 P.M.



Drawing by Marcia Hadley

A very special thank you to Marcia Hadley, Gail Rutter, Marilee Wilkinson, Barb Gambill, Tom Langlitz, Paul Root, Dan New, Les Salowski and Dayle Steenson for their help with this issue of the Wag'n'Tongue



Drawing by
Marcia Hadley

BOARD MEETING MINUTES December 9, 1999

The monthly Board meeting of the G.S.D.C. of St.Louis, Inc. was called to order at 8:00 PM by President Bud Leistner at Uncle Bill's Restaurant at Lindbergh/Lemay Ferry Rd.

The roll was called. Lee Trapp was absent.. Barb Gambill was a visitor to the meeting.

The minutes of the November 11,1999 Board meeting were approved as read.

The minutes of the November 19,1999 Regular meeting were read.

The Treasurer's Report was read.

Alice Becker, Corresponding Secretary, stated that AKC had given permission for the K-9 Awards to be held at the Fall '00 Specialty, she had a regional report and a flyer for pins.

COMMITTEE REPORTS

Training: Lois O'Connor mentioned that a meeting would be held to get the new Training Director and Head Trainer.

President Leistner mentioned a possible site for future club meetings. White-Rodgers Community Center (Affton) on MacKenzie Rd., \$20/3 hours and \$7/additional hour.

GSDC St.Louis Annual Awards: Marcia Hadley has a form ready for anyone who would like to apply for the awards. Marcia asked if she should mail the award forms to members. She will mail the forms to the members who are eligible to win an award this year.

Wag-n-Tongue: Liana New passed out a

paper for the ads, she would like articles sent to her. Stud dog info is needed.

'00 Futurity/Maturity (Sweatshirt): Ricky Harrison mentioned that at the January regular meeting she will try to have a sample of the shirts to look at.

Christmas Party: Ann Douglas mentioned that about 40 people will be attending the Christmas party.

OLD BUSINESS

Marilee Wilkinson showed a flyer that was selling a GSD afghan. She suggested that the club purchase the afghan and raffle it off at the '00 Spring Specialty or the Futurity/Maturity. Marcia Hadley moved that the afghan be purchased as a raffle item. The motion was seconded by Judy DeRousse and passed.

Marilee Wilkinson stated that at the last regular meeting there had been a discussion on judges, she then read a letter that she had written to the club concerning this discussion. Marilee will read the letter again at the next January regular meeting. There was a discussion on this past event.

Gail Stiefferman asked about the club's banner. She stated that according to some 15 year old minutes, Nancy Kearney had the club's banner.

Ann Douglas asked about the money going to Ron Ceccarini - it was stated that he now has the dog that belonged to Halverson and the dog has had some medical expenses.

NEW BUSINESS

Barb Gambill spoke of a drug that may make dogs go blind. The side-effect of drugs

on dogs was discussed.

There being no further business, Marilee Wilkinson moved that the meeting be adjourned. The motion was seconded by Ann Douglas and passed. The meeting was adjourned at 9:25 PM.

Respectfully submitted,

Kathy Redford

Recording Secretary

Treasurer's Report End of Year Summary

Accounting	\$125.00
Advertising	\$891.36
AKC	\$248.00
Contributions	\$1465.50
Dues	\$115.00
Education	\$100.00
Florist	\$239.19
Wag	\$188.51
Insurance	\$418.00
Judges	\$1589.38
Misc. Exp.	\$669.41
Office Expense	\$92.22
Postage	\$158.40
Rent	\$610.00
Taxes	\$459.80
Telephone	\$687.00
Shows	\$1729.79
Royal Hecht	\$469.48
Trophies	\$695.02
K-9	\$380.92
TOTAL	\$11585.97

"In order to keep a true perspective of one's importance, everyone should have a dog that will worship him and a cat that will ignore him."
— Dereke Bruce

**German Shepherd Dog Club
of St. Louis Rescue
April Kornfield
314-296-7225**

AKC News
NBC DATELINE EXPECTED TO AIR ANTI-AKC
PROGRAM

NBC's television program, Dateline, is expected to air a program during the February "sweeps" focusing on unscrupulous puppy mill breeders and charging AKC with somehow being responsible for these tragedies. From everything AKC has been able to gather to date, it appears that the story will closely parallel that of the 1994 ABC "20/20" piece. As a matter of fact, the Investigative News Senior Producer for this Dateline story had been ABC's "20/20" Senior Investigative Producer for that program.

AKC is alarmed at the approach NBC has taken with its story. By her own admission, its producer, Susan Barnett, fraudulently registered a litter of puppies. Through its investigations, AKC discovered that the producer worked in collusion with the president of the Companion Animal Protection Society (CAPS) - a group that takes credit for the "20/20" piece, a 1995 Philadelphia Inquirer story, and the 1999 Reader's Digest article. The Vice President of CAPS had been suspended from all AKC privileges in 1982 for fraud involving an AKC litter registration.

AKC is concerned about the forthcoming Dateline program for the following reasons:

- appears to be based on fraud, collusion and bias, rather than a fair reporting of facts;
- will taint legitimate caring, conscientious breeders who are vitally concerned about the health and welfare of the dogs they breed; and
- will give viewers the impression that those who participate in AKC, its events and clubs, support the breeding and raising of purebred dogs in inhumane conditions, which, of course, none of us do.

Attached are copies of a letter written to Dateline's producer, Susan Barnett, explaining our position on a variety of topics; and a letter written to NBC President & CEO, Robert C. Wright, addressing our concerns. If you are as concerned as we are about this program, let your views be known. Write to NBC Dateline, Neal Shapiro, Executive Producer, 30 Rockefeller Plaza, New York, New York, 10112 or send him an email at Dateline@NBC.com

If you should have any questions, please do not hesitate to contact me.

Alfred L. Cheauré AKC President & CEO
 THE AMERICAN KENNEL CLUB
 ALFRED L. CHEAURÉ
 President and Chief Executive Officer
 (212) 696-8204

December 7, 1999

Ms. Susan Barnett, Producer
 Dateline NBC
 30 Rockefeller Plaza
 New York, NY 10112

Dear Ms. Barnett,

Thank you for the opportunity to respond to your letter of December 2, 1999. This letter provides the facts you are seeking and we appreciate your willingness to present the AKC views in your broadcast.

· **Public Perception:** Our surveys indicate that most people are aware that AKC is an organization about dogs; that AKC registers purebred dogs; and that AKC governs the sport of purebred dogs. The AKC has a 115-year tradition that is focused on maintaining the registration, breeding records and competition records of the purebred dogs in America.

· **Significance of Registration and Guarantees:** The purpose of AKC registration is to allow dogs to compete in AKC events, to provide a complete pedigree record for use by breeders to advance the qualities of each breed, and to maintain breed archival records. The registration of purebred dogs requires that both the sire and dam be of the same breed and registered. The AKC does not license breeders or persons involved in the selling of purebred dogs. AKC itself is not involved in the sale of dogs, and therefore cannot guarantee the health and quality of dogs in its registry.

· **Demand:** AKC does not generate demand for puppies just as the motor vehicle department does not create the demand for automobiles. The cycle starts with buyers generating demand for puppies and then breeders fulfilling this demand. Frequently, a popular advertisement (Taco Chihuahua) or a movie (101 Dalmatians) results in an immediate demand for specific breed puppies.

· **Responsible, Educated Buyers:** AKC cautions potential buyers to spend time to learn about a breed before buying a puppy - considering both the inherent traits of a given breed and the buyer's particular lifestyle and need. AKC has been at the forefront in promoting "responsible dog ownership" which starts with buying a purebred puppy from a responsible dog breeder. AKC maintains a breeder referral program and hotline and has special areas on its website - www.akc.org - devoted to assisting those seeking information on breeds and responsible breeders. It is important to remember that buying a dog is an important first step in a lifetime commitment to "man's best friend." AKC urges buyers to purchase their dogs from reputable breeders who stand behind their puppies and will take

back the puppy should the purchase not work out.

· **Compliance Inspections:** AKC takes its responsibility to purebred dogs seriously. It is the only dog registry organization in America that actually conducts unannounced onsite inspections of large kennels. These inspections focus on AKC record keeping, and the identification of dogs and kennel conditions. In 1998 AKC added random DNA parentage checks as part of the inspection process and over 16,000 DNA samples were taken. During the first full year of DNA testing of large commercial breeders, the parentage accuracy was 92 percent.

· **AKC Discipline:** AKC has a discipline program designed to uphold the standards of the organization. Individuals and breeders who are found to have violated these standards are fined and subject to the loss of AKC privileges including registering, transferring ownership, and competing in AKC events. In 1999, over 570 individuals and breeders have been suspended for up to 10 years from all AKC privileges for violating AKC rules and regulations.

· **Health:** AKC is very concerned over dog health issues and commits over \$1 million annually to the AKC Canine Health Foundation to pursue genetic health research.

· **Fictional Litter:** The fictional litter registered by you reinforces the fact that when fraud is committed, any outcome is possible. As you know, the registration form requires the person signing the application to certify that the information being provided is accurate. If, for example, you registered a pig using a Golden Retriever registration certificate, then fraud has been committed and this situation will be investigated for loss of all AKC privileges.

· **Ethics and Integrity:** AKC has always maintained that ethics and integrity are the cornerstones of the organization. However, AKC recognizes that there are those who are not concerned with ethics and integrity. Every effort is made to ferret out those individuals so that they cannot participate in either AKC registry services or AKC events.

· **Reaching Out:** AKC has taken a major step in reaching out to the general public with its redesigned web site www.akc.org. The site is quickly becoming the information resource for everyone who appreciates dogs, and we are proud of the impact this site has generated. During our first month in operation, over 500,000 unique users visited the site to learn about dogs, their events and participants. Future features will further enhance their educational experiences.

AKC works hard in providing a service to dog

lovers everywhere. It strives to find reasonable and practical solutions to all purebred dog issues, encourages dealing with responsible breeders, promotes responsible dog ownership, and supports the unique bond between man and his companion dog. Thank you for the opportunity to provide these facts.

Sincerely yours,
Alfred L. Cheauré

THE AMERICAN KENNEL CLUB
ALFRED L. CHEAURÉ
President and
Chief Executive Officer
(212) 696-8204
FAX (212) 696-8329

December 29, 1999
Mr. Robert C. Wright
President & CEO
NBC Inc.
30 Rockefeller Plaza
New York, NY 10112

Dear Mr. Wright:

We have been advised by your NBC Investigative News Senior Producer, Mr. Allan Maraynes, that NBC Dateline intends to air a story about the selling by pet stores of substandard puppies that come from puppy mill breeders. Our understanding is that your feature intends to make the unfounded conclusion that registering purebred dogs creates demand.

From what we have learned about the direction of the show, there seems to be considerable confusion about the role of the AKC in the context of the overall dog breeding and selling process. In order to not mislead your viewers or unfairly castigate the AKC, it is important that your production staff understand what the AKC mission includes under its Charter filed with New York State.

Our responsibilities are to:

- Record the parentage of over one million purebred dogs annually. The AKC is not itself involved in the breeding and sale of dogs and cannot guarantee the health and quality of dogs in its registry.
- Sanction approximately 13,000 dog competitions each year held by licensed and member clubs (only dog clubs may be AKC members).
- Support and promote the sport of purebred dogs.

AKC is particularly concerned about the forthcoming Dateline program because it appears to be based on fraud, collusion and bias:

· **Fraud** - Your producer Susan Barnett, by her own admission, intentionally committed fraud in registering a fictional litter and fictional dogs with the AKC. We are justifiably dismayed by this fraud, since Ms. Barnett actually certified to AKC that the information she provided was accurate. AKC relies on the integrity of its applicants and has a right under its charter to expose and discipline those who fraudulently seek to use AKC services. We will pursue disciplinary action against her. Deborah Howard, President of Companion Animal Protection Society (CAPS) also committed fraud by certifying as the sire's owner that Susan Barnett's fictional litter mating took place. She will also be investigated and, if found guilty, suspended from all AKC privileges.

· **Collusion** - Since CAPS appears to be a major source for the information that will be aired by NBC Dateline, you may want to visit the CAPS web site at <http://www.envirolink.org/orgs/CAPS>. CAPS takes credit for a number of "hit" stories against puppy mills and the AKC including a 1994 ABC "20/20" story, a 1995 Philadelphia Inquirer story, and a 1999 Reader's Digest story. Now CAPS is apparently in collusion with your producer for the upcoming NBC Dateline story. You should also be aware that Bob Baker, Vice President of CAPS, was suspended indefinitely by AKC in 1982 for fraud involving an AKC litter registration. Is NBC Dateline not concerned about the credibility of its producers and sources, which should certainly be called into question in this case? Is it NBC Dateline policy to use fraud, deception and collusion in its investigation to ensure a predetermined conclusion? Is this a repeat of the tactics used by NBC Dateline in the GM truck story? I would hope that NBC's management has more integrity than that.

· **Bias** - Furthermore, it appears that your NBC Investigative News Senior Producer, Mr. Allan Maraynes, has a personal bias against the AKC. Are you aware that he was also the Senior Investigative Producer at ABC "20/20" on the 1994 story dealing with puppy mill dogs? His focus was to blame the AKC for the plight of these unfortunate dogs through selective interviews with former AKC employees, again without airing the facts from AKC which would have presented a balanced story to viewers. Is the NBC Dateline story a rehash of the ABC "20/20" program and is it being used to promote a biased viewpoint?

We are concerned that little or nothing seems to have been done to learn about the kennel inspection changes instituted by AKC since the first Mr. Allan Maraynes story. Does your story tell the public about the extensive use of DNA by the AKC? Does your story in-

clude the fact that AKC inspectors are empowered to evaluate the "care and condition" of dogs at the kennels they inspect and, if found unsatisfactory, the breeders are subject to the loss of AKC privileges? Is NBC interested in airing an accurate story or merely one that relies on bias?

Most breeders are caring, conscientious people who are vitally concerned with the health of the dogs they breed. As with any other industry, it is inevitable that a few unscrupulous people are involved. When AKC becomes aware of these unacceptable situations, the breeders are investigated and, if found guilty of violating AKC rules and regulations, are denied all AKC privileges, including the registry of their dogs.

In the feature that is planned for February airing, we trust that our fears are unfounded and that NBC Dateline's goal is to present a truthful story about puppy mill breeders. We would also expect that any connection made to the AKC will accurately reflect the role we play, rather than associating us with elements over which we have no control. Most assuredly, we are not responsible for encouraging or facilitating the success of irresponsible breeders. We responded to questions from NBC in our letter of December 7, 1999 to Susan Barnett and are happy to provide additional facts should they be required. We also encourage you to visit our web site at: <http://www.akc.org>, which serves as the purebred dog information resource for all who love dogs (our site is attracting over 4 million page views a month).

AKC is an organization of integrity. It stands committed to its mission to maintain an historical registration archive, to work with those who enjoy dogs, and to sanction the sport of purebred dogs with fairness and honesty. We intend to explain our position to the millions of dog lovers in America. We do not question NBC's right to air this story. We do, however, question its right to air an inaccurate, biased story and knowingly use fraud to discredit our good name and question our integrity.

By separate letter my general counsel, Mr. Samuel Perry, has written your general counsel to discuss the terms under which we might be willing to give an interview for the planned story. For myself, I would be pleased to meet with you at either your office or mine to discuss the steps AKC has taken in its 115 years of existence to responsibly serve those who share in our love of dogs.

Sincerely yours,
Alfred L. Cheauré
ALC/md